



2nd European Conference on Schizophrenia Research –

From Research to Practice

Joint thematic congress of the Competence Network on Schizophrenia, the German Psychiatry and Psychotherapy Association and the European Psychiatric Association

in cooperation with



WPA World Psychiatric Association and its Section on Schizophrenia

21 – 23 September 2009

Berlin, Germany

Final Programme

accredited by the European Council for Continuing
Education (EACCME) with 18 CME credits

TABLE OF CONTENT

	Page
Welcome Address _____	3
Conference Organisation _____	4
Conference Information _____	5
Format Descriptions /CME Credits _____	8
Opening Ceremony and Welcome Reception _____	10
Overview Scientific Programme _____	11
Scientific Programme	
Monday, 21 September _____	14
Tuesday, 22 September _____	24
Wednesday, 23 September _____	37
Acknowledgements _____	50
Floorplan _____	51
Index Chairpersons, Authors and Presenters _____	52



Dear Colleagues,

On behalf of the organizers and the scientific committee I cordially welcome you to the 2nd ECSR. The 1st European Conference on Schizophrenia Research in 2007 has been a remarkable success and speakers as well as participants encouraged us to pursue our initial plans to establish this thematic conference on a biannual basis. This year's ECSR is a joint thematic conference of the German Competence Network on Schizophrenia and the German and the European Psychiatric Associations. The World Psychiatric Association and its Section on Schizophrenia are co-sponsoring this scientific event. This collaboration is reflected in the scientific program by several sessions organized by the respective associations.

The thematic concept of this year's ECSR – From research to practice – meets not only the objectives of the Competence Network Schizophrenia and its political mandate respectively but also the participants' needs documented in the comments on the evaluation sheets of last year's conference. Accordingly, the scientific program offers both research as well as clinically relevant issues. Internationally distinguished experts as well as young scientists are contributing to this conference by plenary lectures, presentations within pre-arranged or submitted symposia, workshops, and poster sessions. The amount of submitted abstracts has more than doubled compared to the initial conference in 2007 in Düsseldorf. This reflects the extensive research in this field.

Despite intensive research on schizophrenia and its etiology, its pathomechanisms, its early recognition and its optimal treatment, this severe disorder still confronts us with many open questions. The heterogeneous clinical picture of schizophrenia, the overlapping symptomatology with schizoaffective and bipolar disorders as well as the staging of the course of schizophrenia results in an extensive discussion on a revision of current diagnostic classification systems. Despite first path-breaking insights of recent pharmacogenetic studies we are still far away from individualized treatment regimens. These are just two examples of the challenges we still have to meet and which may not only require more intensive research and scientific exchange but may also require a redirection of our research strategies. Networking across borders and establishing a forum that allows for periodically updating the knowledge about schizophrenia and for discussing emerging research and clinically relevant issues may help to deal with the aforementioned problems more effectively in the future. By bringing together European schizophrenia experts and addressing researchers as well as clinicians the European Conference on Schizophrenia Research (ECSR) shall provide an important contribution to these needs and in this specific field to the European Research Area.

Thank you for being part of this scientific community by attending the ECSR 2009 and hopefully the ECSR's to come. I wish all of us an inspiring scientific conference.

*Sincerely yours,
Wolfgang Gaebel
congress president*

on behalf of the scientific as well as the organizing committee

CONFERENCE ORGANISATION

ORGANISERS



Competence Network
on Schizophrenia



European Psychiatric Association (EPA)



German Psychiatry and Psychotherapy
Association (DGPPN)

The conference is also
supported by the



WPA World Psychiatric Association
and its Section on Schizophrenia

LOCAL ORGANISER

PsychoseNetz e.V.
Wolfgang Gaebel, Wolfgang Wölwer,
Viktoria Toeller
c/o Department of Psychiatry
and Psychotherapy
Heinrich-Heine-University Düsseldorf
LVR Clinic Center
Bergische Landstraße 2
40629 Düsseldorf, Germany

PROFESSIONAL CONFERENCE ORGANISER

Hanser & Co GmbH
CPO[®]**HANSER**
SERVICE
Postfach 12 21
22882 Barsbüttel, Germany
Phone: +49 - 40 - 670 88 20
Fax: +49 - 40 - 670 32 83
Email: schizophrenia@cpo-hanser.de

SCIENTIFIC PROGRAMME COMMITTEE

Wolfgang Gaebel, Germany
Congress President

George Awad, Canada
Finn Bengtsson, Sweden
Dinesh Bhugra, UK
Gerd Buchkremer, Germany
George Christodoulou, Greece
Peter Falkai, Germany
Silvana Galderisi, Italy
Wagner F. Gattaz, Brazil
Birte Glenthøj, Denmark
Philippe Gorwood, France
Heinz Häfner, Germany
Cyril Höschl, Czech Republic
Joachim Klosterkötter, Germany
Valery Krasnov, Russia
Shôn Lewis, UK
Jan Libiger, Czech Republic
Wolfgang Maier, Germany
Mario Maj, Italy
Stephen Marder, USA
Patrick McGorry, Australia
Hans-Jürgen Möller, Germany
Franz Müller-Spahn, Switzerland
Merete Nordentoft, Denmark
Jim van Os, The Netherlands
Michael Owen, UK
Victor Peralta, Spain
Wulf Rössler, Switzerland
Pedro Ruiz, USA
Bernard Sabbe, Belgium
Norman Sartorius, Switzerland
Frank Schneider, Germany
Wolfgang Wölwer, Germany
Til Wykes, UK

CONFERENCE VENUE

The Dahlem Cube
Seminaris Science & Conference Center
Takustraße 39
14195 Berlin, Germany

CONFERENCE REGISTRATION COUNTER

All conference material and documentation are available at the conference registration counter located in the foyer on the ground floor of the Dahlem Cube.

OPENING HOURS

Monday, 21 Sept. 2009	08.00 – 18.00 h
Tuesday, 22 Sept. 2009	08.00 – 18.30 h
Wednesday, 23 Sept. 2009	08.00 – 18.00 h

During these opening hours the conference counter can be reached at:
Phone: +49 – 30 – 55 77 97 480

REGISTRATION FEE

On-site Registration	EUR
Competence Network members and members of EPA, DGPPN, WPA	EUR 440,00
Non-members	EUR 490,00
Trainees*	EUR 390,00

* Non-tenured junior scientists or clinical residents in training under 35 years (Trainee status must be confirmed by a certificate in writing by head of department and copy of passport).

ON-SITE REGISTRATION

On-site registration will be processed on a first-come, first-served basis. Priority will be given to pre-registered delegates. Depending on the number of on-site registered delegates, availability of conference documentation may be limited.

NAME BADGES

Participants are kindly requested to wear their name badge at all times during the conference including the Opening Ceremony and Welcome Reception.

CONFERENCE LANGUAGE

The conference language is English. Simultaneous translation will not be provided.

PROGRAMME CHANGES

The organisers cannot assume liability for any changes in the conference programme due to external or unforeseen circumstances.

CERTIFICATE OF ATTENDANCE

A certificate of attendance will be handed out upon demand at the registration counter.

ABSTRACT BOOK

All accepted abstracts are published in an abstract book as a supplement of the European Archives of Psychiatry and Clinical Neurosciences (EAPCN). The abstract book will be handed out together with the conference documentation at the registration counter.

MEDIA CHECK

The Media Check is located in room Yale on the first floor of the Seminaris Science & Conference Center. Speakers are asked to hand in their CD ROM or USB stick, containing the PowerPoint presentation (IBM format or compatible, no multisession) preferably one day before their session but at the latest 90 minutes prior to the presentation. The presentation will be transferred to a special conference notebook in the hall of the presentation. Due to time and technical reasons we kindly ask the speakers not to use their own notebook.

OPENING HOURS

Monday, 21 Sept. 2009	08.00 – 18.00 h
Tuesday, 22 Sept. 2009	08.00 – 18.30 h
Wednesday, 23 Sept. 2009	08.00 – 17.00 h

CONFERENCE INFORMATION

POSTER EXHIBITION

The poster exhibition is located in the foyer on the ground floor of the Dahlem Cube. Posters will be changed daily and are on display for the entire day of the according poster tour. They will be sorted by topics and will be numbered within those topics. The poster exhibition is open to all registered delegates:

Poster Exhibition Times for P-01 to P-04

Monday, 21 Sept. 2009: 10.00 – 18.00 h
Guided Poster Tour: 13.30 – 14.30 h

Poster Exhibition Times for P-05 to P-07

Tuesday, 22 Sept. 2009: 09.00 – 18.00 h
Guided Poster Tour: 13.30 – 14.30 h

Poster Exhibition Times for P-08 to P-11

Wednesday, 23 Sept. 2009: 09.00 – 18.00 h
Guided Poster Tour: 1 13.30 – 14.30 h

Interested participants can meet the authors for discussions of their poster presentation during the time of the poster tour.

Set-up and dismantling times for posters

Posters need to be set up and dismantled on the day of the respective poster tour within the following times:

Set-up:

Monday, 21 Sept. 2009: 08.00 – 10.00 h
Tuesday, 22 Sept. 2009: 08.00 – 09.00 h
Wednesday, 23 Sept. 2009: 08.00 – 09.00 h

Dismantling: 18.00 – 19.00 h on the day of the presentation

Posters which have not been removed within the indicated dismantling time will be disposed.

COFFEE BREAKS

Coffee, tea and mineral water will be served free of charge to all registered delegates during the morning and afternoon coffee breaks from Monday, 21 September to Wednesday, 23 September 2009. Coffee bar stations are located on the first floor and in the foyer of the ground floor next to the poster exhibition.

LUNCH AND RESTAURANTS

A lunch snack will be served to all registered delegates during the lunch breaks from Monday, 21 September to Wednesday, 23 September 2009 in the foyer of the ground floor next to the poster exhibition. The conference venue further provides one restaurant where lunch is available on cash basis.

MOBILE PHONES

Participants are kindly requested to keep their mobile phones turned off while attending the scientific sessions in the meeting rooms.

INSURANCE

The conference fee does not include insurance. All participants are advised to arrange for their own insurance. Health and accident insurance is recommended and has to be purchased in your country of residence.

How to get to the Seminaris Campus Hotel:



By car:

From the North: A 115 southward, AS 2 Hüttenweg direction city, turn left Clayallee, right into Königin Louise-Straße, right into Takustraße / Lansstraße

From the West: A2/A 10/A 115 direction Potsdam/Berlin/AS 4 Zehlendorf/B1 Potsdamer Chaussee/turn left Clayallee/right Königin Louise-Straße/right into Takustraße/Lansstraße

From the South: via A 103 /AS 5 Schlosstraße to the B1, Unter den Eichen, turn right into Fabeckstraße then Lansstraße

From the East: via A 12/A 10/A 113 direction airport BBI (Schönefeld/A 100/A 103/exit 5 Wolfensteindamm, turn right into Schlosstraße direction Dahlem/left into Grunewaldstraße/Königin-Luise-Straße / Lansstraße

Distance to the airport:

Berlin Tegel: Transfer time by taxi approximately 30 minutes depending on traffic

Berlin Schönefeld: Transfer time by taxi approximately 45 minutes depending on traffic

By train:

Berlin main station (ICE, IC-, RE- und RB-Station), then take the underground U3 to station "Dahlem-Dorf". Exit the station towards Königin Louise-Straße. Follow the road for 300 m until you reach the crossroad Takustraße.

City hotels Kurfürstendamm:

Point of departure: Heidelberger Platz

Take the underground U3 to Krumme Lanke and get off at Dahlem-Dorf towards direction Königin Louise-Straße. From here 300 m walk to the Seminaris Campushotel

PARKING

There is an underground car park with direct access to the Seminaris Campus Hotel. The parking fee is 2 Euros per hour and 12 Euros per night.

The scientific programme will comprise the following formats:

PLENARY LECTURES

Invited lectures of 45 min each, covering current hot spots in schizophrenia research and given by leading European experts.

SYMPOSIA

Pre-arranged or submitted symposia of 90 min each, including four presentations and time for discussion covering major topics of the conference. Both symposia with a clear scientific focus and those with a clear clinical focus will be included.

WORKSHOPS

Pre-arranged workshops allowing for detailed discussion on scientific topics and on emerging issues within the revision process of current classification systems and with regard to guideline development.

ORAL PRESENTATION SESSIONS

Submitted presentations grouped by topics into thematic oral sessions of 90 min, including six papers each.

POSTER SESSIONS

Submitted presentations grouped by topics into thematic guided poster sessions.

CME ACCREDITATION

The Competence Network on Schizophrenia c/o LVR Clinic Center, Department of Psychiatry and Psychotherapy, Düsseldorf University is accredited by the European Accreditation Council for Continuing Medical Education (EACCME) to provide the following CME activity for medical specialists. The EACCME is an institution of the European Union of Medical Specialists (UEMS), www.uems.net.

The 2nd European Conference on Schizophrenia Research – From Research to Practice is designated for a maximum of (or 'for up to') **18 hours = 18 CME credit points** of European external CME credits. Each medical specialist should claim only those hours of credit that he/she actually spent in the educational activity.

EACCME credits are recognized by the American Medical Association towards the Physician's Recognition Award (PRA). To convert AECME credit to AMA PRA category 1 credit, contact the AMA.

The Ärztekammer Berlin has granted **18 points** to the conference. The following points are given for each conference day:

21 September: 6 points

22 September: 6 points

23 September: 6 points

Participants interested in obtaining EACCME credits and CME points of the Ärztekammer Berlin (please provide your bar code) may contact the staff at the registration counter on the last day of attendance in order to receive a printed copy of their accreditation certificate.



NEU

Für beide Krankheitsphasen

- ▶ neu zugelassen für die bipolare Manie und bipolare Depression

 **Seroquel Prolong®**
Endlich wieder ich.

www.seroquel.de

Seroquel Prolong® 50 mg Retardtabletten Seroquel Prolong®, 200 mg Retardtabletten, Seroquel Prolong® 300 mg Retardtabletten, Seroquel Prolong® 400 mg Retardtabletten. Wirkstoff: Quetiapinhemifumarat. Verschreibungspflichtig. **Zusammensetzung:** 1 Retardtablette Seroquel Prolong® 50 mg enthält 50 mg Quetiapin (als Quetiapinhemifumarat), 1 Retardtablette Seroquel Prolong® 200 mg enthält 200 mg Quetiapin (als Quetiapinhemifumarat), 1 Retardtablette Seroquel Prolong® 300 mg enthält 300 mg Quetiapin (als Quetiapinhemifumarat), 1 Retardtablette Seroquel Prolong® 400 mg enthält 400 mg Quetiapin (als Quetiapinhemifumarat). Sonstige Bestandteile: Kern: Mikrokristalline Cellulose; Natriumcitrat; Lactose-Monohydrat; Magnesiumstearat (Ph. Eur.); Hypromellose. Überzug: Hypromellose; Macrogol 400; Titandioxid; Eisen(III)-oxid (50 mg, 200 mg, 300 mg Retardtabletten); Eisen(III)-hydroxidox. x H₂O (50 mg Retardtabletten). **Anwendungsgebiete:** Seroquel Prolong® wird angewendet zur Behandlung der Schizophrenie. Bei stabilen Schizophreniepatienten, die bereits auf Seroquel Prolong® eingestellt sind, wirkt Seroquel Prolong® präventiv gegen einen Rückfall. Seroquel Prolong® wird angewendet zur Behandlung von mittelschweren bis schweren manischen Phasen im Rahmen der bipolaren Störung. Seroquel Prolong® wird angewendet zur Behandlung von schweren depressiven Episoden bei bipolaren Störungen. Seroquel Prolong® wird nicht angewendet zur Prävention von Rückfällen in manische oder depressive Phasen. **Gegenanzeigen:** Überempfindlichkeit gegen den Wirkstoff oder einen der sonstigen Bestandteile des Arzneimittels. Die gleichzeitige Verabreichung von Cytochrom-P450-3A4-Hemmern wie HIV-Protease-Hemmern, Antimykotika vom Azoltyp, Erythromycin, Clarithromycin und Nefazodon ist kontraindiziert. **Nebenwirkungen:** Geringe, dosisabhängige Senkung der Schilddrüsenhormonspiegel, insbesondere des Gesamt-T₄ und des freien T₄ mit einem Maximum in den ersten 2-4 Behandlungswochen ohne weitere Abnahme in der Langzeitbehandlung. Geringfügige Abnahme des Gesamt-T₃ und des umgewandelten T₃ wurde nur bei höheren Dosen beobachtet. Sehr häufig: Schwindel, Somnolenz, Kopfschmerzen, Mundtrockenheit, Entzugssymptome (beim Beenden der Behandlung), Erhöhung der Serumtriglyceridspiegel, Erhöhung des Gesamtcholesterin (überwiegend LDL-Cholesterin). Häufig: Leukopenie Synkope, extrapyramidalmotorische Symptome, Tachykardie, verschwommenes Sehen, orthostatische Hypotension, Rhinitis, Obstipation, Dyspepsie, milde Asthenie, periphere Ödeme, Gewichtszunahme, Erhöhung der Serumtransaminasen (ALT, AST), Verringerung der neutrophilen Granulozyten, Anstieg der Blutzuckerspiegel auf hyperglykämische Werte. Gelegentlich: Eosinophilie, Hypersensibilität, Krampfanfälle, Restless Legs Syndrom, Dysarthrie, Dysphagie, Erhöhung der Gamma-GT-Spiegel. Selten: Gelbsucht, Priapismus, malignes neuroleptisches Syndrom. Sehr selten: Anaphylaktische Reaktionen, Diabetes mellitus, Spätzykinesie, Hepatitis, Angioödem, Stevens-Johnson-Syndrom. Nicht bekannt: Neutropenie. **Handelsformen:** Seroquel Prolong® 50 mg / Seroquel Prolong® 200 mg / Seroquel Prolong® 300 mg / Seroquel Prolong® 400 mg Retardtabletten N1 (10 Retardtbl.), N2 (50 Retardtbl.), N3 (100 Retardtbl.); Klinikpackungen. Weitere Informationen enthält die Fach- bzw. Gebrauchsinformation bzw. sind auf Anforderung erhältlich. **AstraZeneca GmbH, 22876 Wedel • www.astrazeneca.de • E-Mail: azinfo@astrazeneca.com • Stand: Dezember 2008 Servicehotline für Produktanfragen: 0800 - 22 88 660**

AZIB-SER-4923/08

OPENING CEREMONY AND WELCOME RECEPTION

Opening Ceremony

09.15 – 10.15 h

Plenary Room

Welcome Addresses

Professor Wolfgang Gaebel, Düsseldorf, Germany

Congress President, Speaker of the Competence Network Schizophrenia

Professor Hans-Jürgen Möller, Munich, Germany

President of the European Psychiatric Association EPA

Professor Frank Schneider, Aachen, Germany

President of the German Psychiatry and Psychotherapy Association DGPPN

Professor Cyril Höschl, Prague, Czech Republic

Board Member of the European Brain Council EBC

“Current status and future perspectives of European Brain Research”

Award Ceremony of the Aretaeus-Award Winner 2009

Welcome Reception

18.00 – 19.00 h

Foyer

At the end of the scientific sessions participants are invited to join the Welcome Reception in the Foyer of Dahlem Cube. Finger food and drinks will be provided.

Room	Plenary	Harvard	Stanford	Princeton	Foyer
09.15 – 10.15	Opening Ceremony				Registration 08.00 – 18.00
10.15 – 11.00	PL-01 Gene-environment interaction				
11.00 – 11.30	Coffee Break				
11.30 – 13.00	S-01 What can we learn from genetic research for the treatment of schizophrenia?	S-02 From stigma research to mental health policy	S-03 Prevention of psychosis – current state and evolving strategies	S-04 Treatment of first episode psychosis: Functional outcome and relapse rate	
13.00 – 14.30	Lunch Break				13.30 – 14.30 h P-01, P-02, P-03, P-04
14.30 – 16.00	S-05 Approaches towards a re-classification of schizophrenia	S-06 Working together: Vocational recovery in early psychosis	S-07 New genetic results from the German Competence Network on Schizophrenia and beyond	S-08 The immune system's impact in pathophysiology and therapy of schizophrenia	
16.00 – 16.30	Coffee Break				
16.30 – 18.00	S-09 Neuroimaging in schizophrenia research	S-10 Addressing stigma – a quality feature for best psychiatric care	W-01 Classification of psychotic disorders: Considerations for DSM-V and ICD-11	O-01 Diagnosis and symptomatology	
18.00 – 19.00	Welcome Reception in the Foyer				

Abbreviations

S – Symposium

O – Oral Presentation

W – Workshop

PL – Plenary

P – Guided Poster Tour

OVERVIEW – Tuesday, 22 September 2009

Room	Plenary	Harvard	Stanford	Princeton	Foyer
Time					
08.30 – 10.00	S-11 Early course and recognition of psychosis	S-12 Polypharmacy in schizophrenia – is there a rationale?	S-13 Schizophrenia as a disorder of default regeneration: Facts and treatment options	O-02 Neuro-psychology I	Registration 08.00 – 18.30
10.00 – 10.30	Coffee Break				
10.30 – 12.00	S-14 Current results from the European Prediction of Psychosis Study (EPOS)	S-15 European practice guidelines: Survey and implementation	S-16 Can a translational approach lead to novel diagnostic and therapeutic perspectives in schizophrenia?	O-03 Neuro-psychology II	
12.15 – 13.00	PL-02 Early recognition and early intervention				
13.00 – 14.30	Lunch Break				13.30 – 14.30 h P-05, P-06, P-07
14.30 – 16.00	S-17 Motivational loss and mood symptoms in first episode psychosis	S-18 New psychosocial treatment options in schizophrenia	S-19 Interventions in people at risk of psychosis: Recent approaches	O-04 Neuro-imaging	
16.00 – 16.30	Coffee Break				
16.30 – 18.00	S-20 First-episode schizophrenia: Early diagnosis, short- and long-term outcome	S-21 Recovery and assertive community treatment in first psychosis	S-22 Controversies about anti-psychotics: From bench to bed side	O-05 Treatment	
18.15 – 19.45	S-23 Establishing the validity of community screening to identify children displaying the antecedents of schizophrenia	S-24 Addressing the pathophysiology of hallucinations to tailor rTMS treatment	W-02 Assessment of outcome to antipsychotic therapy beyond symptom improvement	O-06 Early stages of schizophrenia	

Room	Plenary	Harvard	Stanford	Princeton	Foyer	
08.30 – 10.00	S-25 Is neurocognitive dysfunction a core feature of schizophrenia?	S-26 Obstacles in the management of schizophrenia patients	S-27 Neurobiology of schizophrenia and comorbid cannabis abuse	S-28 Phenotypes and the genetics of schizophrenia	Registration 08.00 – 18.00	
10.00 – 10.30	Coffee Break					
10.30 – 12.00	S-29 Are there any valid neuro-functional and neurostructural endophenotypes for schizophrenia?	W-03 Comparative effectiveness of antipsychotics in the treatment of schizophrenia: Guidelines for clinical practice	S-30 Positive Symptoms of Psychosis: Psychological models and psychotherapeutic interventions	S-31 What can animal models of schizophrenia tell us about basic cognition and risk-related phenotypes?		
12.15 – 13.00	PL-03 Psychological treatments in schizophrenia					
13.00 – 14.30	Lunch Break					13.30 – 14.30 h P-08, P-09, P-10, P-11
14.30 – 16.00	S-32 Large scale proteomic and gene expression studies on post-mortem brains in schizophrenia: What have we gained?	S-33 Cognitive remediation and social functioning in schizophrenia	S-34 Prediction of neuroleptic treatment response in schizophrenia	S-35 Neurobiological and neuro-cognitive findings in persons at risk for psychosis		
16.00 – 16.30	Coffee Break					
16.30 – 17.00	Closing Ceremony					
17.00 – 18.30		O-07 Comorbidity	S-37 Learning potential and related concepts in schizophrenia: From neuro-biology to clinical practice	S-38 Cycloid psychoses: From clinical concepts to biological foundations		

PL-01 PLENARY LECTURES

10.15 – 11.00 h Plenary Room

Gene-environment interaction

Chair: C. Höschl, Prague, Czech Republic

PL-01-001

Gene-environment-wide interaction studies in psychiatry

J. van Os, Maastricht, The Netherlands

S-01 SYMPOSIA

11.30 – 13.00 h Plenary Room

What can we learn from genetic research for the treatment of schizophrenia?

Organized by the Competence Network on Schizophrenia

Chairs: W. Maier, Bonn, Germany

M. Owen, Cardiff, United Kingdom

S-01-001

Recent progress in unravelling the genetic causes of schizophrenia

M. Owen, Cardiff, United Kingdom

S-01-002

Pharmacogenetics of schizophrenia: Current status and future perspectives

M. Arranz, London, United Kingdom

S-01-003

What can we learn from genetic research on substance abuse and schizophrenia?

P. Gorwood, Paris, France

S-02 SYMPOSIA

11.30 – 13.00 h Harvard

From stigma research to mental health policy

Chairs: W. Gaebel, Düsseldorf, Germany

J. Wallcraft, London, United Kingdom

S-02-001

Good practices for combating social exclusion of people with mental health problems

M. van Dievel, Brussels, Belgium

S-02-002

User involvement in mental health research

J. Wallcraft, London, United Kingdom

S-02-003

Evaluation of the Time to Change Anti-stigma Programme

C. Henderson, London, United Kingdom

S-02-004

The German alliance for mental health

H. Zäske, Düsseldorf, Germany

W. Gaebel

S-03	SYMPOSIA
11.30 – 13.00 h	Stanford
Prevention of psychosis – current state and evolving strategies <i>Chairs: S. Ruhrmann, Cologne, Germany</i> <i>G. Berger, Oetwil am See/Zürich, Switzerland</i>	

S-03-001

Pharmacological intervention in the at-risk state for psychosis

S. Ruhrmann, Cologne, Germany
J. Klosterkötter, F. Schultze-Lutter

S-03-002

Prevention of psychosis in persons with schizotypal disorders

M. Nordentoft, Copenhagen, Denmark
D. Nordholm, A. Thorup, P. Jeppesen

S-03-003

A second generation trial in people at-risk of psychosis comparing CBT, aripiprazole and placebo

A. Bechdolf, Cologne, Germany

S-03-004

Neuroprotection in emerging psychotic disorders – an overview

G. Berger, Oetwil am See/Zürich, Switzerland
P. Amminger, M. Berg, L. Philips, A. Yung, P. McGorry

S-04	SYMPOSIA
11.30 – 13.00 h	Princeton
Treatment of first episode psychosis: Functional outcome and relapse rates <i>Chairs: P. D. McGorry, Melbourne, Australia</i> <i>L. Wunderink, Leeuwarden, The Netherlands</i>	

S-04-001

2 year follow-up of withdrawal of antipsychotics in first episode psychosis

M. Riesbeck, Düsseldorf, Germany
W. Gaebel

S-04-002

Discontinuation challenge in remitted first episode psychosis: Functional outcome and relapse rates

L. Wunderink, Leeuwarden, The Netherlands

S-04-003

Relapse prevention in remitted first-episode psychosis patients: a double-blind randomized placebo-controlled study

E. E. Chen, Hong Kong, People's Republic of China
C. L. Hui, M. Lam, C. Law, C. P. Chiu, D. W. Chung, S. Tso, E. P. Pang, K. Chan, S. Hung, W. G. Honer

S-04-004

Preventing the second episode: A randomized controlled trial of relapse prevention therapy versus specialized treatment for remitted first-episode psychosis patients

M. Alvarez-Jimenez, Melbourne, Australia

P-01 POSTER PRESENTATIONS

13.30 – 14.30 h

Foyer

First episode and course of schizophrenia

Chair: L. Wunderink, The Netherlands

P-01-001

Depression after first episode of schizophrenia

A. Dangellia, Tirana, Albania

P-01-002

Quality of life and depression in first-episode schizophrenic patients: An 8-year prospective follow up study. Preliminary results

K. Jaracz, Poznad, Poland

K. Gorna, J. Kiejda, B. Grabowska-Fudala, J. Rybakowski

P-01-003

Attitudes of patients with schizophrenia towards psychiatric research. Preliminary results

K. Jaracz, Poznad, Poland

K. Gorna, J. Kiejda, J. Jaracz, J. Rybakowski

P-01-004

First episode is the best episode: Lessons and limitations in duration of untreated psychosis (DUP) and outcome

A. Shrivastava, Ontario, Canada

N. Shah, M. Thakar, L. Stitt, G. Chinnasamy

P-01-005

Modelling comorbidity: Which model is best?

J. Zielasek, Düsseldorf, Germany

W. Gaebel

P-01-006

Time-course of schizophrenia in first-episode patients: A prospective follow up study. Preliminary results

K. Gorna, Poznan, Poland

K. Jaracz, J. Kiejda, B. Grabowska-Fudala, J. Rybakowski

P-01-007

Akathisia and suicidality in first episode schizophrenia (FES)

F. Seemüller, Munich, Germany

A. Mayr, R. Schennach-Wolff, M. Obermeier, H.-J. Möller, M. Riedel

P-01-008

Outcome of suicidal patients with schizophrenia: Results from a naturalistic study

R. Schennach-Wolff, Munich, Germany

M. Jäger, F. Seemüller, M. Obermeier, H.-J. Möller, M. Riedel

P-01-009

Retrospective analysis of outcome predictors for schizophrenia: A study of 65 young adults at their first psychotic episode

S. Ingretolli, Rome, Italy

P. L. Bandinelli, F. Magnani, G. Kotzalidis, S. Germanà, G. Ducci

P-01-010

6-month clinical and functional outcome in first-episode psychosis in a Spanish population

D. Bergé, Barcelona, Spain

A. Mane, P. Salgado, A. Merino, A. Bulbena

P-01-011

Psychosis reveals lymphocytic hypophysitis: A case report

M.-M. Theil, Braunschweig, Germany

C. Mayer, K.-L. Vollbrecht, K. Wessel, A. Diehl

P-02 POSTER PRESENTATIONS

13.30 – 14.30 h

Foyer

Assessment

Chair: J. F. P. Bridges, Baltimore, USA

P-02-001

Consistency of subsyndromes of BPRS–E scale in course of schizophrenia in 12 years prospective study

A. Cichocki, Cracow, Poland

A. Cechnicki, J. Franczyk

P-02-002

How to handle the PANSS in statistical analyses

M. Obermeier, Munich, Germany

A. Mayr, R. Schennach-Wolff, F. Seemüller,

H.-J. Möller, M. Riedel

P-02-003

Construct validity of four positive and negative syndrome scale items

S. van Geert, Gent, Belgium

S. Vanheule

P-02-004

A structured interview guide for the Scale for Assessment of Negative Symptoms (SANS)

R. Gaur, Newark, USA

J. Schoemaker, L. Ramirez, S. DeSanti

P-02-005

Instrument development of medication adherence among individuals with schizophrenia based on theory of planned behavior: A preliminary report

E. Lin, Taichung County, Taiwan

A. Kopelowicz, C.-H. Chan, L.-C. Wang

P-02-006

A triolog of patient, relative and therapist in the assessment of psychosocial functioning in schizophrenia – the PSP Self-Rating and the PSP Relative-Rating based on the Personal and Social Performance (PSP) Scale

D. Schaub, Bochum, Germany

G. Juckel, M. Brüne

P-02-007

Valuing patient-relevant endpoints from the perspective of patients diagnosed with schizophrenia in Germany: A conjoint analysis

J. F. P. Bridges, Baltimore, USA

E. T. Kinter, A. Schmeding, I. Rudolph

P-02-008

Careless, sceptical and model patients – a latent class analysis of the Medication Adherence Rating Scale (MARS)

S. Jaeger, Ravensburg, Germany

W. Bayer, C. Pfiffner, P. Weiser, H. Wiesner,

T. Steinert

P-02-010

Brief versions (30 items) of Frankfurt Complaints Questionnaire in the diagnosis of psychotic disorders

M. Vargas, Zamora, Spain

N. Jimeno-Bulnes

P-03 POSTER PRESENTATIONS

13.30 – 14.30 h

Foyer

Early stages of schizophrenia

Chair: G. Berger, Oetwil am See/Zürich, Switzerland

P-03-001

Association of childhood history of impulse control spectrum disorders and early onset schizophrenia

A. Stathopoulou, Patras, Greece
K. Karaivazoglou

P-03-002

Niacin sensitivity, membrane fatty acids and phospholipase A2 activity-associations in people at risk to develop psychosis

B. Milleit, Jena, Germany
M. R. Schaefer, C. Milleit, M. Otto, U. C. Hipler, H. Sauer, P. Amminger, S. Smesny

P-03-003

Cognitive and clinical characteristics in high-risk children for schizophrenia: comparative study among first-degree relatives

I. Baeza, Barcelona, Spain
E. de la Serna, S. Andrés, O. Puig, V. Sánchez-Gistau, S. Romero, J. Toro, J. Castro-Fornieles

P-03-004

Relationship between clinical and neuropsychological characteristics in children and adolescents first degree relatives of subjects with schizophrenia

E. de la Serna, Barcelona, Spain
I. Baeza, J. Toro, V. Sanchez-Guistau, S. Romero, O. Puig, S. Andres, M. Bernardo, J. Castro-Fornieles

P-03-005

Neuropsychological profile of patients in a prodromal state of psychosis

R. Zimmermann, Basel, Switzerland
U. Gschwandtner, M. O. Pflueger, J. Aston, S. Borgwardt, R.-D. Stieglitz, A. Riecher-Rössler

P-03-006

Facial emotion recognition and EEG in the prodromal phase of schizophrenia

S. Stroth, Düsseldorf, Germany
J. Brinkmeyer, M. Streit, M. List, S. Ruhrmann, M. Wagner, A. Bechdolf, W. Gaebel, W. Wölwer

P-03-007

Autonomic dysfunction in unaffected first-degree relatives of patients suffering from schizophrenia

S. Berger, Jena, Germany

P-03-009

Catalan experience of an early psychosis intervention program (PAE-TPI): A descriptive study

A. Barajas, Barcelona, Spain
M. San Emeterio, M. Teixidó, I. Álvarez, M. A. Argany, M. Carbonero, A. Escuder, E. Sánchez, L. Lalucat

P-03-010

A case report of schizophrenia debuting with criminal behavior: Insanity defense vs. incompetence to stand trial?

G. Vyshka, Tirana, Albania
S. Preçi, B. Ymaj

P-04 POSTER PRESENTATIONS

13.30 – 14.30 h

Foyer

Symptomatology, Quality of Life

Chair: L. Voruganti, Canada

P-04-001

Geriatric depressive and bipolar schizo-affective disorders

X. Y. Baran, White Plains, USA

H. Moonseong, R. Young

P-04-002

Water poisoning in schizophrenic patients in conjunction with psychotic perceptions

S. Ler, Sarajevo, Bosnia and Herzegovina

G. Sulejmanpasic-Arslanagic, A. Frenjo

P-04-003

The satisfaction of clients (schizophrenic children and their parents) to Isfahan Child and Adolescents Guidance Clinic (a qualitative research)

M. Aminolroayaie Yamini, Isfahan, Iran

A. Attari, H. A. Abedi

P-04-004

Social profile and social adjustment: Important aspects of quality of life in patients with schizophrenia

A. K. P. M. Menezes, São Paulo, Brazil

M. P. Abrahão, E. S. Di Sarno, A. B. Vizzotto, I. C. Napolitano, P. C. Buchain, G. R. Oliveira, H. Elkis

P-04-005

Diagnostic stability at 24 months follow-up of 80 patients with brief psychotic disorder

V. Sanchez-Gistau, Barcelona, Spain

L. Rodriguez Inicio, I. Grande, M. Bernardo, E. Parellada

P-04-006

Awareness and stigmatization of schizophrenia in South Korea

S. Joe, Changnyung-Kun Kyungnam, Republic of Korea

D. Kwon, Y. Kim, S. Cho

P-04-007

Anhedonia as a prognostic symptom of schizophrenia duration

N. Orlova, Kiev, Ukraine

M. Shkliar

P-04-008

Anhedonia at patients with schizophrenia: Pathogenesis mechanisms

N. Orlova, Kiev, Ukraine

G. Dzub, M. Shkliar

P-04-009

The relevance of cycloid psychoses in clinical psychiatry

W. Verhoeven, Venray, The Netherlands

J. Egger

P-04-010

The evaluation of relation between schizophrenia and suicide risk in north west of Iran

E. Rezaei Ghalechi, Ardabil, Iran

F. Sadeghi Movahhed, J. Vahabzadeh Monshie

P-04-011

Fertility and schizophrenia: Clinical aspects in a women's sample in treatment in the community

M. Zamarro Arranz, Madrid, Spain

D. Crespo, R. Gutiérrez Labrador, A. Cordero Villafáfila, J. Ramos

P-04-012

War and schizophrenia

H. Ansari, Teheran, Iran

S-05 SYMPOSIUM

14.30 – 16.00 h Plenary Room

Approaches towards a re-classification of schizophrenia

Organized by the Competence Network on Schizophrenia

*Chairs: W. Gaebel, Düsseldorf, Germany
P.D. Mc Gorry, Melbourne, Australia*

S-05-001

Concepts of reclassifying psychotic disorders

W. Gaebel, Düsseldorf, Germany

S-05-002

The dimensional approach for psychotic disorders

J. van Os, Maastricht, The Netherlands

S-05-003

Deficit schizophrenia – a disorder separate from non-deficit forms of schizophrenia

S. Galderisi, Naples, Italy

S-05-004

The prodromal stage of psychosis – a separate category in the classification systems?

P. D. McGorry, Melbourne, Australia

S-06 SYMPOSIA

14.30 – 16.00 h Harvard

Working together: Vocational recovery in early psychosis

*Chairs: S. Singh, Coventry, United Kingdom
J. Smith, Worcester, United Kingdom*

S-06-001

IPS in early psychosis: The Australian experience

E. Killackey, Melbourne, Australia

S-06-002

IPS in early psychosis: UK studies

*B. Major, London, United Kingdom
M. Hinton, A. Flint, A. Chalmers-Brown,
K. McLoughlin, S. Johnson*

S-06-003

IPS in early psychosis: UK studies

M. Rinaldi, London, United Kingdom

S-06-004

Vocational recovery in ethnic minorities

*A. Lau, London, United Kingdom
V. Sturdy, A. Black*

S-06-005

Meaningful lives: International consensus statement on vocational recovery in first episode psychosis

J. Smith, Worcester, United Kingdom

S-07	SYMPOSIA
14.30 – 16.00 h	Stanford
<p>New genetic results from the German Competence Network on Schizophrenia and beyond</p> <p><i>Chairs: W. Maier, Bonn, Germany</i> <i>D. Rujescu, Munich, Germany</i></p>	

S-07-001

Progression of prodromal patients to schizophrenia

R. Mössner, Bonn, Germany

S-07-002

New results of genome-wide association studies in schizophrenia

S. Cichon, Bonn, Germany

S-07-003

New genetic strategies in schizophrenia: Focus on copy-number variants

D. Rujescu, Munich, Germany

S-07-004

Overlapping genetic findings in schizophrenia and bipolar disorder

M. Rietschel, Mannheim, Germany

S-08	SYMPOSIA
14.30 – 16.00 h	Princeton
<p>The immune system's impact in pathophysiology and therapy of schizophrenia</p> <p><i>Chairs: M. J. Schwarz, Munich, Germany</i> <i>A.-M. Myint, Munich, Germany</i></p>	

S-08-001

Microglia activation and functional changes in schizophrenia: Recent findings from brain imaging

H. Klein, Groningen, The Netherlands

J. Doorduyn, R. Dierckx, E. de Vries

S-08-002

RNA signature as diagnostic markers for schizophrenia

H. Drexhage, Rotterdam, The Netherlands

R. C. Drexhage, D. Cohen, W. Nolen

S-08-003

Kynurenine metabolism in pathophysiology of schizophrenia: The link between immune-metabolic-neurochemical systems interaction

A.-M. Myint, Munich, Germany

S-08-004

Influencing the immune and the kynurenines systems by medication: New treatment strategies for schizophrenia

M. J. Schwarz, Munich, Germany

M. Riedel, A.-M. Myint, N. Müller

S-09	SYMPOSIA
16.30 – 18.00 h	Plenary Room
Neuroimaging in schizophrenia research Organized by the Germany Psychiatry and Psychotherapy Association <i>Chairs: F. Schneider, Aachen, Germany P. Falkai, Göttingen, Germany</i>	

S-09-001

Subtyping schizophrenia by understanding the pathophysiologically relevant neuronal networks

O. Gruber, Göttingen, Germany

S-09-002

Emotion-Cognition interaction in the course of schizophrenia

U. Habel, Aachen, Germany

S-09-003

Neuroimaging findings of a multi-centre study on cognitive behavioral therapy in patients with schizophrenia

*T. Kircher, Marburg, Germany
H. Walter, G. Winterer, B. Müller, J. Herrlich,
G. Wiedemann, K. Vogeley, A. Wittorf, S. Klingberg, A. Krug*

S-09-004

Understanding the pathophysiology of schizophrenia hallucinations and thought disorders

W. Strik, Bern, Switzerland

S-10	SYMPOSIA
16.30 – 18.00 h	Harvard
Addressing stigma – a quality feature for best psychiatric care <i>Chairs: W. Rössler, Zürich, Switzerland L. Freimueller, Düsseldorf, Germany</i>	

S-10-001

Involvement of peer experts in mental health services – overcoming or continuation of stigmatization

J. Utschakowski, Bremen, Germany

S-10-002

Building stigma resistance in patients with schizophrenia – a strategy for individual and public health action

*M. Amering, Vienna, Austria
I. Sibitz*

S-10-003

Antistigma-competence for mental health professionals

L. Freimueller, Düsseldorf, Germany

S-10-004

Antistigma features in community mental health settings

R. Borbé, Ravensburg, Germany

W-01	WORKSHOPS
16.30 – 18.00 h	Stanford
<p>Classification of psychotic disorders: Considerations for DSM-V and ICD-11 with a focus on schizo-affective disorders</p> <p>Organized by the WPA section on schizophrenia and the DSM-V workgroup on schizophrenia and related psychotic disorders</p> <p><i>Chairs: J. van Os, Maastricht, The Netherlands</i> <i>M. Owen, Cardiff, United Kingdom</i></p> <p><i>Presenters: W. Gaebel, Düsseldorf, Germany</i> <i>M. Owen, Cardiff, United Kingdom</i> <i>J. van Os, Maastricht, The Netherlands</i></p>	

O-01	ORAL PRESENTATIONS
16.30 – 18.00 h	Princeton
<p>Diagnosis and symptomatology</p> <p><i>Chairs: A. G. Awad, Toronto, Canada</i> <i>S. Klingberg, Tübingen, Germany</i></p>	

O-01-001

Critical use of the concept of schizophrenia

O. Maeser, Feldkirch, Austria

O-01-002

Schizophrenia classification: Historical heterogeneity and structural repetitions

K. Mc Nally, Dublin, Ireland

O-01-003

Hallucinations vs. delusions. Symptomatology may be associated with suicidality in a five year follow up, first episode psychosis sample

J. Evensen, Oslo, Norway

J. I. Røssberg, S. Friis, I. Melle

O-01-004

Clinical relevance of ego-pathology (Ich-Störungen) in psychosis: A review of literature and implications for future research

O. Pintsov, K. Papageorgiou, Vienna, Austria

R. Strobl

O-01-005

Schizophrenic illness in pregnant and postpartum women – an update

S. Misri, British Columbia, Canada

O-01-006

For the WPA Section „Psychoanalysis in Psychiatry“: New inquiries in the family dynamics of schizophrenic patients

M. Ammon, Berlin, Germany

S-11 SYMPOSIA

08.30 – 10.00 h Plenary Room

Early course and recognition of psychosis

Chairs: M. Wagner, Bonn, Germany

R. K. R. Salokangas, Turku, Finland

S-11-001

**Perceived negative attitude of others –
Early sign of psychosis**

R. K. R. Salokangas, Turku, Finland

*M. Heinimaa, T. Svirskis, J. Klosterkötter,
S. Ruhrmann, H. Graf von Reventlow, D. Linsen,
P. Dingemans, M. Birchwood, P. Patterson*

S-11-002

**Cognition in the prodrome: Findings,
models, and implications for clinical pre-
diction**

M. Wagner, Bonn, Germany

*I. Frommann, W. Maier, A. Bechdorf, S. Ruhr-
mann, R. Pukrop, J. Klosterkötter, J. Brinkmeyer,
W. Wölwer, J. Gaebel, P. Decker, H. J. Möller,
K. Maurer, H. Häfner*

S-11-003

**The ERIraos: A two-stage early recognition
inventory for psychosis**

F. Rausch, Mannheim, Germany

*K. Maurer, A. Bechdorf, S. Ruhrmann, F.
Schultze-Lutter, M. Wagner, J. Klosterkötter,
W. Maier, H. Häfner*

S-11-004

**The role of cognitive behavior therapy in
the early course of schizophrenia – Can we
do better?**

R. Vauth, Basel, Switzerland

S-12 SYMPOSIA

08.30 – 10.00 h Harvard

**Polypharmacy in schizophrenia – is there a
rationale?**

Organized by the German Psychiatry and Psy-
chotherapy Association and the Competence
Network on Schizophrenia

Chairs: W. Gaebel, Düsseldorf, Germany

M. Schmauß, Augsburg, Germany

S-12-001

**Simultaneous prescribing of atypical an-
tipsychotics, conventional antipsychotics
and anticholinergics – a European study
and it's follow-ups**

W. J. Broekema, Amersfoort, The Netherlands

S-12-002

**Antipsychotic combinations vs. monothera-
py: A metaanalysis of randomised con-
trolled trials**

S. Leucht, Munich, Germany

S-12-003

**Risks of polypharmacy: Pharmacological
interactions**

G. Gründer, Aachen, Germany

S-12-004

**The DEBIT-Trial: An intervention to reduce
antipsychotic polypharmacy prescribing in
adult wards**

G. Harrison, Bristol, United Kingdom

S-13	SYMPOSIA
08.30 – 10.00 h	Stanford
<p>Schizophrenia as a disorder of default regeneration: Facts and treatment options <i>Chairs: P. Falkai, Göttingen, Germany</i> <i>W. Cahn, Utrecht, The Netherlands</i></p>	

S-13-001

Disturbed function of NRG-1 in schizophrenia: what is the consequence for the brain?

I. Deakin, Oxford, United Kingdom

S-13-002

Loss of grey matter volume over time in schizophrenia: Neurodegeneration or disturbed neuroplasticity?

W. Cahn, Utrecht, The Netherlands

E. Derks, N. van Haren, H. Hulshoff Pol, R. Kahn

S-13-003

Improving neural plasticity in schizophrenia via exercise

F. Pajonk, Liebenburg, Germany

S-13-004

Recombinant human erythropoietin: Treatment against default regeneration in schizophrenia

P. Falkai, Göttingen, Germany

O-02	ORAL PRESENTATIONS
08.30 – 10.00 h	Princeton
<p>Neuropsychology I <i>Chairs: W. Wölwer, Düsseldorf, Germany</i> <i>A. A. Reichenberg, London, United Kingdom</i></p>	

O-02-001

Social cognition in schizophrenia: Interaction with social functioning

M. Brüne, Bochum, Germany

O-02-002

Exaggerated self-attribution bias in an agency-judgment task in patients with schizophrenia?

M. Voss, Berlin, Germany

M. Hauser, B. Repp, J. Gallinat, G. Knoblich, A. Heinz

O-02-003

Misattribution of emotional salience to neutral faces in paranoid schizophrenia

E. Haralanova, Aachen, Germany

R. Gur, G. Gründer

O-02-004

Visuo-spatial perspective taking in schizophrenia

S. Landgraf, Paris, France

I. Amado, M.-O. Krebs, J.-P. Olié, E. van der Meer, A. Berthoz

O-02-005

Attentional modulation of external speech perception in patients with hallucinations and delusions

L. M. Ilankovic, Munich, Germany

P. Allen, R. Engel, H.-J. Möller, K. Hennig-Fast

O-02-006

Comparisional reaction time to sound and light in schizophrenic patients and normal people

A. Homayouni, Bandargaz, Iran

G. A. Nikpour, S. J. Mosavi Amiri

S-14	SYMPOSIA
10.30 – 12.00 h	Plenary Room
Current results from the European Prediction of Psychosis Study (EPOS) <i>Chairs: J. Klosterkötter, Cologne, Germany S. Ruhrmann, Cologne, Germany</i>	

S-14-001

Estimating the risk for psychosis

*S. Ruhrmann, Cologne, Germany
F. Schultze-Lutter, R. K. R. Salokangas, D. H. Linszen, M. Birchwood, G. Juckel, A. Heinz, S. Lewis, A. Morrison, J. Klosterkötter*

S-14-002

Premorbid adjustment and psychosis risk in EPOS study

*M. Heinimaa, Turku, Finland
H. Jukka, T. Laine, T. Svirskis, J. Korkeila, R. K. R. Salokangas, M. Birchwood, D. Linszen, S. Ruhrmann, J. Klosterkötter*

S-14-003

Axis-I diagnoses of patients at high risk of psychosis – results from the European Prediction of Psychosis Study EPOS

*T. Svirskis, Turku, Finland
R. K. R. Salokangas, M. Heinimaa, S. Ruhrmann, J. Klosterkötter, M. Birchwood, D. Linszen, H. Graf von Reventlow*

S-14-004

Treatment and support provided to UHR clients across the EPOS sites and health-care systems

M. Birchwood, Birmingham, United Kingdom

S-15	SYMPOSIA
10.30 – 12.00 h	Harvard
European Practice Guidelines: Survey and implementation Organized by the European Psychiatric Association and the Competence Network Schizophrenia <i>Chairs: H.-J. Möller, Munich, Germany W. Gaebel, Düsseldorf, Germany</i>	

S-15-001

Inconsistencies of evidence grading in guidelines as a methodological problem

H.-J. Möller, Munich, Germany

S-15-002

European and international guidelines on schizophrenia – consistencies and disagreements

S. Weinmann, Berlin, Germany

S-15-003

European Guidance – from development to implementation

W. Gaebel, Düsseldorf, Germany

S-15-004

Increased metabolic and cardiovascular morbidity in patients with schizophrenia. Recommendation for diagnoses and treatment

M. de Hert, Kortenberg, Belgium

S-16	SYMPOSIA
10.30 – 12.00 h	Stanford
<p>Can a translational approach lead to novel diagnostic and therapeutic perspectives in schizophrenia?</p> <p><i>Chairs: K. Q. Do, Prilly-Lausanne, Switzerland P. J. Uhlhaas, Frankfurt/Main, Germany</i></p>	

S-16-001
Implication of recent findings in genetics of schizophrenia
T. Werge, Roskilde, Denmark

S-16-002
Disease biomarkers in first-onset schizophrenia
S. Bahn, Cambridge, United Kingdom

S-16-003
High-frequency gamma-band oscillations during perceptual organisation in chronic and first-episode schizophrenia patients
P. J. Uhlhaas, Frankfurt/Main, Germany

S-16-004
Translational approach to schizophrenia psychopathology: New susceptibility genes and treatment perspectives
*K. Q. Do, Prilly-Lausanne, Switzerland
P. Conus, J. H. Cabungcal, A. Frank, R. Gysin, S. Lavoie, A. Polari, P. Steullet, T. Teichmann, M. Cuenod*

O-03	ORAL PRESENTATIONS
10.30 – 12.00 h	Princeton
<p>Neuropsychology II</p> <p><i>Chairs: S. Galderisi, Naples, Italy E. Joyce, London, United Kingdom</i></p>	

O-03-001
The Continuous Performance Test is not an endophenotype for schizophrenia
*A. Brand, Bremen, Germany
E. Chkonja, M. Roinishvili, M. H. Herzog*

O-03-002
Shared backward masking deficits in schizophrenic and bipolar patients
*M. Roinishvili, Tbilisi, Georgian
E. Chkonja, M. H. Herzog, A. Brand*

O-03-003
Is the magno-cellular system deficient in schizophrenic patients?
*M. Herzog, Lausanne, Switzerland
M. Roinishvili, E. Chkonja, C. Grimsen, A. Brand*

O-03-004
Distinct impairments of visual working memory subprocesses in early-onset schizophrenia – evidence from fMRI and EEG
*R. Bittner, Frankfurt, Germany
C. Haenschel, A. Roebroek, F. Haertling, A. Rotarska-Jagiela, K. Maurer, R. Goebel, W. Singer, D. Linden*

O-03-005
The first episode: Neurophysiological abnormalities overlap the markers-endophenotypes and correlate with immunological data
*I. Lebedeva, Moscow, Russia
V. Kaleda, A. Barkhatova, S. Golubev, T. Torocheshnikova, Z. Sarmanova, I. Otman, A. Mitrophanov, T. Klushnik*

O-03-006
A comparative study of soft neurological signs in patients of schizophrenia and obsessive compulsive disorder
*N. Singla, Amritsar, India
P. Singh, P. D. Gargi*

PL-02 PLENARY LECTURES

12.15 – 13.00 h Plenary Room

Early recognition and early intervention

Chair: J. Klosterkötter, Cologne, Germany

PL-02-001

Evidence and perspectives in early recognition and early intervention of psychosis

P. D. McGorry, Melbourne, Australia

P-05a POSTER PRESENTATIONS

13.30 – 14.30 h Foyer

Somatic treatment (clinical)

Chair: S. Leucht, Munich, Germany

P-05a-001

Tranquilizing activity of the norbornene series arylsulfonamides

H. Zlenko, Dnepropetrovsk, Ukraine

*L. Kasyan, V. Palchikov, H. Demchenko, A. Kas-
yan*

P-05a-002

Combining clozapine with other antipsychotics

N. van de Kerkhof, Venray, The Netherlands

F. van der Heijden, W. Verhoeven

P-05a-003

Characteristics of antipsychotic prescriptions prior to the introduction of clozapine

A. K. P. M. Menezes, São Paulo, Brazil

B. S Avrichir, H. Elkis

P-05a-004

Rehospitalization as a measure of effectiveness: Patients with schizophrenia discharged with clozapine or non clozapine antipsychotic from a university hospital

A. P. Werneck, Sao Paulo, Brazil

H. Elkis

P-05a-006

Negative symptoms and schizophrenia: Which role for the atypical antipsychotics?

D. Correia, Porto, Portugal

T. Gandra, H. Lourenço, L. Martins Correia,

R. Pedrosa, F. Silva

P-05a-007

Treatment of negative symptoms in schizophrenia: Alternative drugs to antipsychotics

F. Silva, Porto, Portugal

R. Pedrosa, D. Correia, T. Gandra, H. Lourenço,

L. Martins Correia

P-05a-008

Effectiveness of antipsychotics in ambulatory schizophrenia: Five-year retrospective cohort study

M. Vargas, Zamora, Spain

N. Asensio, S. Martin

P-05b POSTER PRESENTATIONS

13.30 – 14.30 h Foyer

Somatic treatment (clinical)

Chair: J. Zielasek, Düsseldorf, Germany

P-05b-009

Risperidone long-acting injection (RLAI) in the treatment of schizophrenia: 9-month preliminary results from the electronic Schizophrenia Treatment Adherence Registry (E-STAR) in Russia

E. Lyubov, Moscow, Russia

I. Y. Gurovich, K. Maslova

P-05b-010

Predictors for treatment response and use of benzodiazepines in patients with acute schizophrenia

C. Tessier, Issy Les Moulineaux, France

A. Schreiner, M. Blanc, L. Bidzan, D. Hoeben,

G. Badescu, C. Niolu, V. Jukic

P-05b-011

Safety, tolerability and treatment response of flexible doses of Paliperidone ER in acutely exacerbated patients with schizophrenia

A. Schreiner, Neuss, Germany

G. M. Badescu, V. Jukic, A. Siracusano, V. Maciulis, D. Hoeben, M. Schmauss

P-05b-012

A flexible-dose study of Paliperidone ER in non-acute patients with schizophrenia previously unsuccessfully treated with oral Risperidone or oral Olanzapine

A. Schreiner, Neuss, Germany

B. Millet, P. Rocca, D. Hoeben, M. V. Ivanov, M. Zink, A. Bagala, M. Kotler

P-05b-013

ECT and schizophrenia: An update

S. Richa, Beirut, Lebanon

A. Alameddine

P-05b-014

Description of the elaboration process and results of a Clinical Practice Guideline about schizophrenia and early psychosis management for the Spanish National Health System

M. Sanemeterio, Barcelona, Spain

R. Casañas Sanchez, L. Lalucat Jo, A. Parada, E. Sánchez, J. Anglés, A. Aznar, D. Bussé, M. Carbonero, M. Romero, R. Rubio

P-05b-015

Comparative study of international clinical practice guidelines about schizophrenia and early psychosis management

L. Lalucat-Jo, Barcelona, Spain

M. Carbonero, G. Faus, I. Guillamon, C. Martínez, M. Laia, M. Sanemeterio, I. Sánchez, E. Sánchez, M. Teixidó, F. Villegas

P-05b-016

Similar efficacy results in short- and long-term studies of aripiprazole in adolescents (ages 15-17) and adults with schizophrenia

C. Correll, Glen Oaks, USA

M. Nyilas, C. Aurang, N. Jin, T. Iwamoto, R. Owen, J. Y. Loze, W. Carson, A. Forbes

P-06a POSTER PRESENTATIONS

13.30 – 14.30 h

Foyer

Drug Treatment (basic and side effects)

Chair: M. Schmauß, Augsburg, Germany

P-06a-002

Neurotrophic proteins in psychotic disorders

N. van de Kerkhof, Venray, The Netherlands

D. Fekkes, W. Verhoeven, F. van der Heijden

P-06a-003

Heritable causes of drug response using the example of an extensive metabolizing Turkish migrant

H. Ince, Hannover, Germany

P-06a-004

Effects of selegiline on negative symptoms in schizophrenia: A double-blind, placebo-controlled, study

E. Abdollahian, Mashhad, Iran

P-06a-005

D2-receptor occupancies and corresponding plasma concentrations: A comparison of paliperidone extended-release (ER) with risperidone immediate-release (IR)

L. Hargarter, Neuss, Germany

S. Rossenu, E. Mannaert, A. Mehnert, A. Vermeulen

P-06a-006

Differential effects of first- and second-generation antipsychotics on energy metabolism in frontal and temporal cortex of first-episode schizophrenia patients

K. Langbein, Jena, Germany

I. Nenadic, R. Rzanny, H. Sauer, S. Smesny

P-06a-007

Metabolic side effects of "Risperidon"

M. Maroufi, Isfahan, Iran

F. Kianvash, H. Zargarzadeh, M. Sadrameli

P-06b POSTER PRESENTATIONS

13.30 – 14.30 h Foyer

Drug Treatment (basic and side effects)

Chair: *M. Riedel, Munich, Germany*

P-06b-008

Metabolic changes in patients undergoing treatment with atypical antipsychotics – preliminary results from a prospective study in antipsychotic-naïve patients

C. Opgen-Rhein, Berlin, Germany

T. M. Tam Ta, M. Möhlig, T. Wetter, I. Sahin,

L. Junqueira, H. Himmerich, M. Dettling

P-06b-009

The relation between Body Mass Index (BMI) and demographic and clinical aspects among patients with schizophrenia

G. Ahmadzadeh, Isfahan, Iran

A. Farhat, A. Hemat

P-06b-010

Comparison of incidence of diabetes mellitus in schizophrenic patients treated with atypical or typical antipsychotics

A. Attari, Isfahan, Iran

M. Amini, S. Mansoori, R. Bagherian

P-06b-011

Risk of abnormal movement disorders for typical and atypical antipsychotics according to the Spanish Pharmacovigilance System database

N. Jimeno, Valladolid, Spain

M. Sáinz, S. Ortega, C. Campo, I. Salada, A. Carvajal, L. Martin

P-06b-012

Case series study of the effectiveness of a combination of a PDE 10 inhibitor end NMDA modulator in 6 patients with schizophrenia

M. Yeghiyan, Yerevan, Armenia

G. Yeghiyan, M. Tosalakyan

P-06b-013

The role of stress factors in the weight gain of the patients with schizophrenia and antipsychotic treatment

M. Pîrlog, Craiova, Romania

P-06b-014

Prevalence of metabolic syndrome in elderly schizophrenic patients in Ireland

M. Gulzar, Castlebar, Ireland

A. Rafiq, M. O'Cuill

P-07 POSTER PRESENTATIONS

13.30 – 14.30 h Foyer

Psychosocial treatment, cognitive rehabilitation

Chair: *M. van der Gaag, Den Haag,*

The Netherlands

P-07-001

Adaptative concept of delusions – the next step for cognitive therapy of schizophrenia

M. Jablonski, Kraków, Poland

P-07-002

Evaluation of an integrated care program for severe psychiatric disorders

O. Brotons Girona, Valencia, Spain

S. i. care program the Valencian group for SMD

P-07-003

Treatment services for heroin users with comorbid psychosis: An essential component of an outpatient individual program for drug addiction treatment

L. Iliopoulou, Ioannina, Greece

V. Koutras, E. Fidi, K. Komninou, S. Gonta, D. Lagou, V. Basogianni, S. Thomos

P-07-004

A brief intervention for psychotic patients with co-occurring cannabis use: A literature review

M. Cadranel, Poissy, France

S. Mille, L. Romo, C. Dubertret

P-07-005

Affect recognition impairments and violence in schizophrenia: A first application of the Training of Affect Recognition (TAR) to offenders suffering from schizophrenia

*N. Frommann, Düsseldorf, Germany
M. Brandt, W. Schmidbauer, W. Woelwer*

P-07-006

Remediation of odor identification deficit in schizophrenia: Creation and experimentation of an olfacto-visual tool

*M.-L. Hamtat, Bordeaux Cedex, France
J. Doron, O. Grondin, G. Sicard*

P-07-007

A case management program for schizophrenic patients: A one year follow-up study

*M. Laia, Barcelona, Spain
L. Mauri, J. Gómez Benito, J. A. Amador Campos,
L. Lalucat*

P-07-008

Memory improvements after cognitive remediation therapy in adolescents with schizophrenia

*O. Puig, Barcelona, Spain
I. Baeza, V. Sánchez, R. Penadés, E. De la Serna,
L. Fonrodona, J. Castro-Fornieles*

P-07-009

First results of an ongoing study in Greece. Evaluation of the effectiveness of Integrated Psychological Therapy (IPT) in a Greek population

*S. Rakitzi, Athens, Greece
V. Roder, P. Georgila, S. Sanida, K. Efthimiou,
D. Müller*

S-17

SYMPOSIA

14.30 – 16.00 h

Plenary Room

Motivational loss and mood symptoms in first episode psychosis

*Chairs: I. Melle, Oslo, Norway
J. I. Roessberg, Oslo, Norway*

S-17-001

Apathy, neurocognition and functioning in first episode psychosis

*A. Faerden, Oslo, Norway
A. Finset, S. Friis, I. Melle*

S-17-002

Depression and depressive symptoms in first episode psychosis

*K. L. Romm, Oslo, Norway
J. I. Rossberg, A. O. Berg, E. A. Barrett, A. Faerden,
I. Agartz, O. Andreassen, I. Melle*

S-17-003

Associations between suicidality and the course of hallucinations and delusions over the first five years

J. Evensen, Oslo, Norway

S-17-004

Decreased reported arousal of aversive affective stimuli in schizophrenia and bipolar disorder

*S. Aminoff, Oslo, Norway
J. Jensen, T. V. Lagerberg, O. A. Andreassen,
I. Melle*

S-18	SYMPOSIA
14.30 – 16.00 h	Harvard
New psychosocial treatment options in schizophrenia Organized by the Competence Network on Schizophrenia <i>Chairs: W. Rössler, Zürich, Switzerland T. Wykes, London, United Kingdom</i>	

S-18-001
CBT for psychosis: Not a quasi-neuroleptic
M. Birchwood, Birmingham, United Kingdom

S-18-002
Targeting negative symptoms by CBT
*S. Klingberg, Tübingen, Germany
A. Wittorf, J. Herrlich, G. Wiedemann, C. Meisner, G. Buchkremer, W. Wölwer*

S-18-003
Rehabilitation in the basic cognitive and social cognitive domain
*V. Roder, Bern, Switzerland
D. Müller*

S-18-004
Supported Employment – a new approach in occupational rehabilitation
W. Rössler, Zürich, Switzerland

S-19	SYMPOSIA
14.30 – 16.00 h	Stanford
Interventions in people at risk of psychosis: Recent approaches <i>Chairs: A. Bechdolf, Cologne, Germany P. D. McGorry, Melbourne, Australia</i>	

S-19-001
Early detection and psychological intervention in people at-risk of psychosis: Baseline characteristics of the EDI2 trial
*P. French, Manchester, United Kingdom
A. Morrison, R. Bentall, S. Lewis, M. Birchwood, D. Fowler, A. Gumley, P. Jones, G. Dunn, L. Davies*

S-19-002
Preventing psychosis in a help-seeking population with distressing symptoms: Preliminary results
*M. van der Gaag, Den Haag, The Netherlands
J. Rietdijk, S. Dragt, R. Klaassen*

S-19-003
CBT in the early initial prodromal state: Results of a randomized trial
A. Bechdolf, Cologne, Germany

S-19-004
A double blind, placebo-controlled randomized trial of low-dose risperidone, cognitive-behaviour therapy, and befriending in young people with subthreshold symptoms at incipient risk of psychotic disorder
*P. D. McGorry, Melbourne, Australia
Y. Alison, B. Nelson*

O-04 ORAL PRESENTATIONS

14.30 – 16.00 h **Princeton**

Neuro-imaging

Chairs: W. Cahn, Utrecht, The Netherlands

O. Gruber, Göttingen, Germany

O-04-001

Altered default-mode network activity in schizophrenia: A resting state fMRI study

G. Mingoia, Jena, Germany

K. Langbein, S. Scherpiet, G. Wagner, R. G. M. Schlösser, C. Gaser, S. Heinrich, I. Nenadic

O-04-002

Arousal-cognition decoupling in schizophrenia: An EEG-fMRI study

J. Foucher, Strasbourg, France

D. Luck, C. Marrer, B.-T. Pham, H. Ozenberger, I. Offerlin-Meyer

O-04-003

QEEG and negative symptoms in patients with and without transition to psychosis

U. Gschwandtner, Basel, Switzerland

R. Zimmermann, M. O. Pflueger, A. Riecher-Rössler, P. Fuhr

O-04-004

A multimodal imaging study of theory of mind functioning in a Japanese sample of schizophrenia patients

K. Koelkebeck, Münster, Germany

K. Hirao, T. Saze, J. Miyata, R. Kawada, P. Ohrmann, A. Pedersen, J. Bauer, V. Arolt, T. Murai

O-04-005

Cortical gyrification in monozygotic twins discordant for schizophrenia

R. Maitra, Jena, Germany

C. Gaser, A. Mohr, C. Kaufmann, M. Knauth, H. Sauer, M. Weisbrod, I. Nenadic

O-04-006

Source-based morphometry of grey matter volume in the first-episode schizophrenia

T. Kasperek, Brno, Czech Republic

R. Marek, D. Schwarz, R. Prikryl, J. Vanicek, M. Mikl, E. Ceskova

S-20 SYMPOSIA

16.30 – 18.00 h **Plenary Room**

First-episode schizophrenia: Early diagnosis, short- and long-term outcome

Chairs: H.-J. Möller, Munich, Germany

M. Riedel, Munich, Germany

S-20-001

How can we improve the early diagnosis of psychosis?

A. Riecher-Rössler, Basel, Switzerland

S-20-002

8-week results of the efficacy and extrapyramidal tolerability of risperidone or haloperidol in first-episode schizophrenia

M. Jäger, Guenzburg, Germany

M. Riedel, H.-J. Möller

S-20-003

Depressive symptoms and their impact on short-term outcome in first-episode schizophrenia

R. Schennach-Wolff, Munich, Germany

S-20-004

Predictors in long-term treatment of first-episode schizophrenia

W. Wölwer, Düsseldorf, Germany

M. Riesbeck, W. Gaebel, for the German Study Group on First Episode Schizophrenia

S-21	SYMPOSIA
16.30 – 18.00 h	Harvard
Recovery and assertive community treatment in first psychosis	
<i>Chairs: B. Jacobsen, Nijmegen, The Netherlands</i>	
<i>H. Gijsman, Nijmegen, The Netherlands</i>	

S-21-001

Backgrounds and theory

M. Elfrink, Nijmegen, The Netherlands

S-21-002

Medication and recovery

B. Jacobsen, Nijmegen, The Netherlands

S-21-004

Focus on surrounding people

S. Gradussen, Nijmegen, The Netherlands

S-22	SYMPOSIA
16.30 – 18.00 h	Stanford
Controversies about antipsychotics: From bench to bed side	
<i>Chairs: J. Foucher, Strasbourg, France</i>	
<i>G. Stoeber, Würzburg, Germany</i>	

S-22-001

Which brain targets for antipsychotics?

The issue of extrastriatal binding sites

G. Gründer, Aachen, Germany

S-22-002

Long term brain plasticity related to hyper- and hypo-dopaminergic states

J. Zwiller, Strasbourg, France

S-22-003

Evidence for antipsychotic-induced supersensitivity psychoses

J. Moncrieff, London, United Kingdom

S-22-004

Parakinesia: The psychosis related movement disorder mistaken for tardive dyskinesia – the keys for the differential diagnosis

G. Stoeber, Würzburg, Germany

B. Pfuhlmann

O-05 ORAL PRESENTATIONS

16.30 – 18.00 h **Princeton**

Treatment

*Chairs: T. Wobrock, Göttingen, Germany
V. Roder, Bern, Switzerland*

O-05-001

Early response and its predictive validity within a randomised double-blind 1 year follow-up trial

*R. Schennach-Wolff, Munich, Germany
M. Jäger, A. Mayr, F. Seemüller, M. Riesbeck,
W. Wölwer, W. Gaebel, H.-J. Möller, M. Riedel*

O-05-002

Hospitalization in patients with schizophrenia – which factors predict hospital readmission?

*M. Ujeyl, Berlin, Germany
A. Höer, G. Glaeske, B. Häussler, H. Gothe*

O-05-003

The cost-effectiveness of cognitive behavioral therapy for persistent and recurrent psychosis

*M. van der Gaag, Den Haag, Netherlands
D. Stant, K. Wolters, D. Wiersma*

O-05-004

Does a preceding cognitive training enhance the therapeutic effects of psychoeducation in schizophrenia? – Results of the COGPIP study

*G. Pitschel-Walz, Munich, Germany
J. Bäuml, T. Froböse, A. Gsottschneider, T. Jahn*

O-05-005

Effects of olanzapine and a typical anti-psychotic drug on dimensions of schizophrenia

*U. Barahmand, Tabriz, Iran
M. Abbasi*

O-05-006

Is clozapine cardiologically safe?

*I. Grande, Barcelona, Spain
A. Pons, A. Torras, I. Baeza, M. Bernardo*

S-23 SYMPOSIA

18.15 – 19.45 h **Plenary Room**

Establishing the validity of community screening to identify children displaying the antecedents of schizophrenia

*Chairs: S. Hodgins, London, United Kingdom
K. R. Laurens, London,
United Kingdom*

S-23-001

Children presenting putative antecedents of schizophrenia: Clinical symptoms and disorders

*S. Hodgins, London, United Kingdom
M. Riaz, K. R. Laurens*

S-23-002

Cognitive performance of 9 to 11 year old children who present putative antecedents of schizophrenia

*A. Cullen, London, United Kingdom
H. Dickson, S. Hodgins, R. Morris, R. Murray,
K. R. Laurens*

S-23-003

Do children with antecedents of schizophrenia display cognitive, motor and academic deficits similar to those that have been identified in children who develop schizophrenia in adulthood?

*H. Dickson, London, United Kingdom
A. E. Cullen, K. R. Laurens, S. Hodgins*

S-23-004

Movement abnormalities in children with putative antecedents of schizophrenia

*D. Macmanus, London, United Kingdom
A. E. Cullen, K. R. Laurens, S. Hodgins*

S-23-005

Brain function abnormalities in 9 to 11 year old children presenting putative antecedents of schizophrenia: Evidence from event-related potential recordings

*K. R. Laurens, London, United Kingdom
S. Hodgins, G. Mould, R. Murray, E. Taylor*

S-24	SYMPOSIA
18.15 – 19.45 h	Harvard
<p>Addressing the pathophysiology of hallucinations to tailor rTMS treatment <i>Chairs: J. Foucher, Strasbourg, France</i> <i>S. Dollfus, Caen, France</i></p>	

S-24-001
Functional MRI to define rTMS' targets in the case of complex multisensory hallucinations
R. Jardri, Lille, France

S-24-003
Two days treatment of auditory hallucinations by high frequency rTMS guided by cerebral imaging: a 6 months follow-up study
S. Dollfus, Caen, France
A. Montagne-Larmurier, O. Etard

S-24-004
Fronto-temporal functional dysconnectivity during the course of hallucinations
J. Foucher, Strasbourg, France
B.-T. Pham, D. Gounot, C. Marrer, J.-M. Danion

W-02	WORKSHOPS
18.15 – 19.45 h	Stanford
<p>Assessment of outcome to antipsychotic therapy beyond symptom improvement <i>Chair: A. G. Awad, Toronto, Canada</i> <i>Presenters: A. G. Awad, Toronto, Canada</i> <i>L. Voruganti, Oakville, Canada</i></p>	

O-06	ORAL PRESENTATIONS
18.15 – 19.45 h	Princeton
<p>Early stages of schizophrenia <i>Chairs: M. Nordentoft, Copenhagen, Denmark</i> <i>G. Berger, Oetwil am See/Zürich, Switzerland</i></p>	

O-06-001
An innovating tool for the early diagnosis of schizophrenia and other psychotic disorders
H. Wilquin, Villeneuve D'ascq, France
Y. Delevoeye-Turrell

O-06-002
Is there coffee in the coffee grounds? Findings at the lower end of the psychosis continuum
V. Ajdacic-Gross, Zürich, Switzerland
S. Vetter, M. Müller, H. Haker, W. Kawohl, W. Rössler

O-06-004
Is alexithymia a prodromal feature of psychoses?
M. Joukamaa, Tampere, Finland
A. Mattila, H. Puntola, J. Miettunen, A. Taanila, I. Moilanen, H. Ebeling, M. Heinimaa, J. Veijola

O-06-005
The phenomenology of first episode psychosis: a qualitative exploration challenging early psychosis interventions
C. Tranulis, Montreal, Canada
L. Park, O. Freudenreich, B. Good

O-06-006
Working memory impairment compromises episodic memory formation in at-risk mental state individuals for psychosis
M. O. Pflueger, Basel, Switzerland
R. Zimmermann, U. Gschwandtner, J. Aston, S. Borgwardt, R.-D. Stieglitz, A. Riecher-Rössler

S-25	SYMPOSIA
08.30 – 10.00 h	Harvard
<p>Is neurocognitive dysfunction a core feature of schizophrenia? Organized by the Schizophrenia Section of the European Psychiatric Association <i>Chairs: S. Galderisi, Naples, Italy</i> <i>W. Gaebel, Düsseldorf, Germany</i></p>	
<p>S-25-001 Neurocognitive impairment in individuals with an at risk mental state for psychosis <i>A. Riecher-Rössler, Basel, Switzerland</i></p>	
<p>S-25-002 Neurocognitive impairment in first episode schizophrenia <i>S. Galderisi, Naples, Italy</i></p>	
<p>S-25-003 Neurocognitive impairment in schizophrenia and other psychotic disorders <i>A. A. Reichenberg, London, United Kingdom</i></p>	
<p>S-25-004 Neurocognitive impairment as an outcome predictor in schizophrenia <i>E. Joyce, London, United Kingdom</i></p>	
S-26	SYMPOSIA
08.30 – 10.00 h	Harvard
<p>Obstacles in the management of schizophrenia patients Organized by the Competence Network on Schizophrenia <i>Chairs: S. Hodgins, London, United Kingdom</i> <i>P. Garety, London, United Kingdom</i></p>	
<p>S-26-001 Non-adherence to antipsychotic medication: Effects of integrated treatment on relapse and rehospitalisation in recent onset schizophrenia <i>G. Morken, Trondheim, Norway</i></p>	
<p>S-26-002 Suicidality among patients with psychoses in schizophrenia spectrum <i>M. Nordentoft, Copenhagen, Denmark</i></p>	
<p>S-26-003 Aggression and violent behaviour among people with schizophrenia <i>S. Hodgins, London, United Kingdom</i></p>	
<p>S-26-004 Physical illness and schizophrenia <i>S. Leucht, Munich, Germany</i></p>	

S-27	SYMPOSIA
08.30 – 10.00 h	Stanford
Neurobiology of schizophrenia and comorbid cannabis abuse	
Chairs: <i>T. Wobrock, Göttingen, Germany</i> <i>P. Roser, Bochum, Germany</i>	

S-27-001
Brain imaging of cannabis abusing schizophrenia patients
W. Cahn, Utrecht, Netherlands
M. Rais, N. van Haren, H. Hulshoff Pol, R. Kahn

S-27-002
Event-related potentials of cannabis consumers and schizophrenia patients
P. Roser, Bochum, Germany

S-27-003
CSF parameters of cannabis abusing schizophrenia patients
M. Leweke, Mannheim, Germany

S-27-004
Schizophrenia, Cannabis and TMS – link to GABAergic deficit
T. Wobrock, Göttingen, Germany
A. Hasan, B. Malchow, C. Wolff-Menzler, B. Guse, T. Schneider-Axmann, P. Falkai

S-28	SYMPOSIA
08.30 – 10.00 h	Princeton
Phenotypes and the genetics of schizophrenia	
Chairs: <i>G. Stoeber, Würzburg, Germany</i> <i>W. Verhoeven, Venray, Netherlands</i>	

S-28-001
Phenotypes in the 22q11 deletion syndrome and Prader-Willi syndrome
W. Verhoeven, Venray, Netherlands
J. Egger

S-28-002
Cycloid psychoses: Twin and family studies
B. Pfulmann, Würzburg, Germany

S-28-003
Kraepelin's schizophasia revisited: Phenotypes and heredity
B. Jabs, Dresden, Germany

S-28-004
Periodic catatonia: Genome-wide association studies
G. Stoeber, Würzburg, Germany
D. Schanze, A. Ekici, B. Pfulmann, A. Reis

S-29	SYMPOSIA
10.30 – 12.00 h	Plenary Room
<p>Are there any valid neurofunctional and neurostructural endophenotypes for schizophrenia? Organized by the Schizophrenia Section of the World Psychiatric Association <i>Chairs: B. Glenthøj, Glostrup, Denmark</i> <i>W. Cahn, The Netherlands</i></p>	

S-29-001

Specific and composite endophenotypes for schizophrenia: Tools in the search for a better treatment for schizophrenia?

B. Glenthøj, Glostrup, Denmark

S-29-002

Is there a core in schizophrenia? Neurocognitive disorders and schizophrenia

J. Parnas, Copenhagen, Denmark

S-29-003

Are there any valid structural endophenotypes for schizophrenia?

W. Cahn, Utrecht, Netherlands

H. Boos, N. van Haren, H. Schnack, H. Hulshoff Pol, R. Kahn

S-29-004

Neurochemical endophenotype for schizophrenia

O. Howes, London, United Kingdom

W-03	WORKSHOPS
10.30 – 12.00 h	Harvard
<p>Comparative effectiveness of antipsychotics in the treatment of schizophrenia: Guidelines for clinical practice Organised by the WPA sections on schizophrenia and pharmacopsychiatry <i>Chairs: W. Gaebel, Düsseldorf, Germany</i> <i>H.-J. Möller, Munich, Germany</i></p>	

Consensus statement on the use and usefulness of second generation antipsychotic medication

H.-J. Möller, Munich, Germany

Findings from recently-concluded meta-analyses on comparative antipsychotics

S. Leucht, Munich, Germany

What do guidelines tell us about the effectiveness of antipsychotics?

P. Falkai, Göttingen, Germany

Steps towards a joint position statement by the two WPA-sections on schizophrenia and pharmacopsychiatry

W. Gaebel, Düsseldorf, Germany

S-30 SYMPOSIA

10.30 – 12.00 h

Stanford

Positive Symptoms of Psychosis: Psychological models and psychotherapeutic interventions

*Chairs: S. Klingberg, Tübingen, Germany
I. Myin-Germeys, Maastricht, The Netherlands*

S-30-001

Social cognitive biases, self-representations, and delusional content in psychosis

*S. Mehl, Bonn, Germany
M. Landsberg, M. Wagner*

S-30-002

Fluctuations in self-esteem and paranoia in the context of daily life

*I. Myin-Germeys, Maastricht, The Netherlands
V. Thewissen, R. Bentall, J. van Os*

S-30-003

Cognitive behavioural treatment of persistent positive symptoms: First results of the POSITIVE-Study

*S. Klingberg, Tübingen, Germany
A. Wittorf, B. Müller, T. Kircher, H. H. König,
G. Sartory, M. Wagner, G. Wiedemann, C. Meisner,
W. Wölwer, G. Buchkremer*

S-30-004

Improving social recovery in psychosis using CBT: The ISREP trial

D. Fowler, Norwich, United Kingdom

S-31 SYMPOSIA

10.30 – 12.00 h

Princeton

What can animal models of schizophrenia tell us about basic cognition and risk-related phenotypes?

*Chairs: A. Schmitt, Göttingen, Germany
R. Wolf, Bochum, Germany*

S-31-001

Schizophrenia-related alterations in a pharmacological animal model using NMDA receptor antagonism

*D. Rujescu, Munich, Germany
J. Genius, A. Hartmann, H.-J. Möller*

S-31-002

Effects of excitotoxic lesion of the ventral thalamus on sensorimotor gating in pubertal and adult rats

R. Wolf, Bochum, Germany

S-31-003

Perinatal hypoxia as probable environmental animal model of obstetric complications in schizophrenia

*A. Schmitt, Göttingen, Germany
M. Fendt, P. Gebicke-Haerter, U. Sommer,
P. Falkai*

S-31-004

Schizophrenia-related behavioral changes in G72/G30 transgenic mice

D.-M. Otte, Bonn, Germany

PL-03	PLENARY LECTURES
12.15 – 13.00 h	Plenary Room
Psychological treatments in schizophrenia <i>Chair: H.-J. Möller, Munich, Germany</i>	

PL-03-001

Psychological treatments in schizophrenia: Current evidence and future perspectives
P. Garety, London, United Kingdom

P-08a	POSTER PRESENTATIONS
13.30 – 14.30 h	Foyer
Neuropsychology <i>Chair: W. Wölwer, Düsseldorf, Germany</i>	

P-08a-001

Task performance of schizophrenia patients on working memory components
P. Quee, Groningen, The Netherlands
P. Eling, F. Heijden, van der, H. Hildebrandt

P-08a-002

Neuropsychological performance in elderly patients with schizophrenia: A comparative study with Alzheimer's disease
N. Pujol, Barcelona, Spain
R. Penadés

P-08a-003

Association of deficits in smell identification and basic cognition in patients with schizophrenia, their first-degree relatives and matched healthy controls
N. Mossaheb, Vienna, Austria
M. Schloegelhofer, R. M. Kaufmann, T. Aninilkumparambil, A. Gold, C. Himmelbauer, S. Inreiter, L. Schlehaider, H. N. Aschauer

P-08a-004

Sex-related differences in smell identification in patients with schizophrenia, their first-degree relatives and matched healthy controls
M. Schloegelhofer, Vienna, Austria
N. Mossaheb, R. M. Kaufmann, T. Aninilkumparambil, A. Gold, C. Himmelbauer, S. Inreiter, L. Schlehaider, H. N. Aschauer

P-08a-005

Counterfactual cognitive deficits in schizophrenic patients: Preliminary results
F. Contreras, Llabregat, Spain
B. Benejam, A. Caño

P-08a-006

A longitudinal study of empathic abilities in schizophrenia and healthy controls
H. Haker, Zurich, Switzerland
S. Jann, J. Schimansky, W. Rössler

P-08a-008

Theory of mind and sense of agency in schizophrenia
J. Schimansky, Zurich, Switzerland

P-08a-010

Suicidality connected with mentalizing anomalies in schizophrenia: A study with stabilized outpatients
R. Duñó, Sabadell, Spain
E. Pousa, M. Miguélez, I. Montalvo, N. Benito, D. Suárez, A. Tobeña

P-08a-011

Cognitive insight and mental-state reasoning in patients with paranoid schizophrenia
A. Lehmann, Berlin, Germany
J. Gallinat, C. Montag

P-08b POSTER PRESENTATIONS

13.30 – 14.30 h

Foyer

Neuropsychology

Chair: M. Wagner, Bonn, Germany

P-08b-012

The possible role of post-movement cortical motor processing in self-disturbances

U. Thiemann, Heidelberg, Germany

F. Resch, M. Weisbrod, S. Bender

P-08b-013

Dissecting early bottom-up and top-down dysfunction during visual attention in schizophrenia

A. Neuhaus, Berlin, Germany

E. Hahn, C. Opgen-Rhein, C. Urbanek, T. M. Tam Ta, M. Gross, M. Dettling

P-08b-014

Attention Network Test (ANT) reveals gender-specific alterations of executive function in schizophrenia

C. Urbanek, Berlin, Germany

A. Neuhaus, C. Opgen-Rhein, R. Schaub, E. Hahn, T.-M.-Tam Ta, M. Dettling

P-08b-015

Anterior shift of maximal global field power in depressed first episode schizophrenia during an auditory oddball paradigm

S. Begré, Berne, Switzerland

H. Kleinlogel

P-08b-016

N100 deflection and N100/P200 ratio as response to non-target stimuli during an auditory oddball paradigm are positively related to psychopathology in recent onset schizophrenia

S. Begré, Berne, Switzerland

H. Kleinlogel

P-08b-017

Functional significance and clinical value of the P2 component of the ERP. Preliminary results of a study on patients with schizophrenia

F. R. Santos, Porto, Portugal

P. Almeida, J. B. Vieira, M. Machado, C. Silveira,

F. Barbosa, J. Marques-Teixeira

P-08b-018

Repeatability of auditory processing deficits in young adults with first episode psychosis – preliminary results

S. Kaprinis, Thessaloniki, Greece

V. Iliadou, K. Apalla, D. Kandylis, G. Kaprinis

P-08b-019

Deficient prepulse inhibition and attention-task performance in remitted schizophrenia patients and their unaffected siblings

S. Giakoumaki, Heraklion Crete, Greece

P. Roussos, A. Vardiampasis, Z. Fousteri, P. Bit-sios

P-08b-020

QEEG spectral power density changes in the early course of schizophrenia

M. O. Pflueger, Basel, Switzerland

U. Gschwandtner, R. Zimmermann, A. Riecher-Rössler, P. Fuhr

P-08b-021

Mental retardation and schizophrenia

M. T. Pinto Neves, Barreiro, Portugal

G. M. Marcelino da Ponte

P-09 POSTER PRESENTATIONS

13.30 – 14.30 Foyer

Neuroimaging

Chair: *W. Strik, Bern, Switzerland*

P-09-001

Interaction of Dopamin and Glutamate: In vivo evidence for dysfunctions in schizophrenia during reward processing

J. Gallinat, Berlin, Germany

A. Heinz, F. Schubert

P-09-002

Hippocampus dysfunction, deficient memory encoding, and positive symptoms in schizophrenia

K. Zierhut, Magdeburg, Germany

B. Bogerts, B. Schott, M. Walter, D. Albrecht,

E. Düzel, K. Schiltz

P-09-003

Increased and decreased fractional anisotropy in schizophrenia: A study with DTI and tract-based spatial statistics

K. Koch, Jena, Germany

G. Wagner, R. Dahnke, C. Schachtzabel,

C. Schultz, M. Axer, M. Röbel, D. Güllmar, J.

Reichenbach, H. Sauer, R. Schlösser

P-09-004

Psychopathological correlates of the entorhinal cortical shape in schizophrenia

C. Schultz, Jena, Germany

K. Koch, G. Wagner, M. Roebel, I. Nenadic,

C. Schachtzabel, C. Albrecht, J. Reichenbach,

H. Sauer, R. G. Schlösser

P-09-005

Associations of psychopathology with phospholipid and high-energy metabolism in unmedicated first-episode schizophrenia patients

K. Langbein, Jena, Germany

I. Nenadic, R. Rzanny, H. Sauer, S. Smesny

P-09-006

Asymmetry of language activation in families with multiple incidences of schizophrenia

J. Cermak, Prague, Czech Republic

F. Spaniel, J. Tintera, P. Mohr

P-09-007

Dopamine effects on reversal learning in unmedicated schizophrenia patients

F. Schlagenhauf, Berlin, Germany

A. Beck, Q. Huys, M. Rapp, B. Schott, J. Wrase,

J. Gallinat, A. Heinz

P-10 POSTER PRESENTATIONS

13.30 – 14.30 h Foyer

Neurobiology

Chair: *O. Howes, London, United Kingdom*

P-10-001

Disturbed skin barrier function in schizophrenia: Reconsidering the link between mental illness and skin physiology

B. Milleit, Jena, Germany

C. Schmelzer, A. Hinder, A. Köhler, C. Schneider,

M. Rudzok, U. Cyriax, R. Neubert, J. Fluhr,

H. Sauer, S. Smesny

P-10-002

TH-1/TH-2 cytokine imbalance more pronounced in neuroleptic-naïve first episode schizophrenia

B. Milleit, Jena, Germany

C. Milleit, U. C. Hipler, D. Neuhaus, K. Roediger,

H. Sauer, S. Smesny

P-10-003

Niacin skin flush response in schizophrenia linked to soluble interleukin 2 receptor serum levels

B. Milleit, Jena, Germany

C. Milleit, U. C. Hipler, D. Neuhaus, K. Roediger,

M. Rudzok, U. Cyriax, A. Köhler, C. Schneider,

H. Sauer, S. Smesny

P-10-004

Albumin binding sites in first-episode drug-naïve patients with paranoid schizophrenia studied by subnanosecond fluorescence spectroscopy

N. Smolina, Moscow, Russia

Y. Gryzunov, T. Syreishchikova, M. Uzbekov, G. Dobretsov, E. Misionzhnik, A. Komar, V. Tokarev

P-10-005

Biochemical changes in first-episode drug-naïve schizophrenic patients

M. Uzbekov, Moscow, Russia

M. Uzbekov, E. Misionzhnik, I. Gurovich, A. Shmukler, Y. Gryzunov, V. Tokarev

P-10-006

The link between Hyperhomocysteinemia and psychotic disorders in childhood and adolescents

S. Purvina, Riga, Latvia

L. Kevere, D. Bauze, M. Zeibarts, A. Rizevs, M. Caune, I. Purvins, R. Andrezina

P-10-007

Emerging roles of prohibitin in schizophrenia: Evidence from human postmortem studies and a rat model of psychosis

H.-G. Bernstein, Magdeburg, Germany

K.-H. Smalla, M. Mikhaylova, J. Salin, B. Bogerts, A. Schmitt, R. Van der Schors, G. Smit, K. W. Li, D. Duerrschmidt, E. D. Gundelfinger

P-10-008

Prevention of MPTP (N-metil-1-4-phenil-1,2,3,6-tetrahydropyridine) neurotoxic dopaminergical effect in rats' brain using preparation containing antioxidant effects

G. Kazaryan, Yerevan, Armenia

P-10-009

Cardio-respiratory coupling indicates suppression of vagal activity in acute schizophrenia

S. Berger, Jena, Germany

J. Peupelmann, C. T. Ramachandraith, V. K. Yeragani, H. Sauer, K. J. Bär

P-10-010

An OCD patient presenting with a cerebellum venous variant in a family with a strong schizophrenia loading

N. Borja Santos, Amadora, Portugal

B. Trancas, A. Luengo, C. Vieira, J. Ribeiro, J. Ramos, M. Martins, A. Neto, G. Cardoso

P-11 POSTER PRESENTATIONS

13.30 – 14.30 h

Foyer

Genetics

Chair: D. Rujescu, Munich, Germany

P-11-001

Impact of the AH11 gene on the vulnerability to schizophrenia: a case-control association study

O. Rivero, Burjassot, Spain

A. Reif, C. Nájera, T. Töpner, J. Sanjuan, K.-P. Lesch

P-11-002

A2 risk allele of Interleukin-1beta modifies both grey and white matter in temporal lobe in schizophrenia

R. Maitra, Jena, Germany

R. Schloesser, A. Rosa, S. Papiol, C. Gaser, C. Schachtzabel, J. R. Reichenbach, H. Sauer, L. Fananas, I. Nenadic

P-11-003

The influence of genetic variants of the CHRNA7 gene on backward masking in schizophrenic patients

G. Bakanidze, Berlin, Germany

I. Puls, A. Brand, M. Herzog, M. Roinishvili, E. Chkonia

P-11-004

Functional neuroanatomy of set-shifting is differentially associated with Val108/158Met genotypes in schizophrenic patients and healthy controls

P. Ohrmann, Münster, Germany

K. Domschke, A. Wilmsmeier, J. Bauer, C. Hohoff, H. Kugel, T. Suslow, V. Arolt, A. Pedersen

P-11-005

Association of HTR2C but not leptin gene with antipsychotic-induced weight gain in a German sample

C. Opgen-Rhein, Berlin, Germany

E.-J. Brandl, D. Mueller, A. Tiwari, T. Sander, M. Dettling

P-11-006

Homer and Postsynaptic Density: A putative target of antipsychotic treatment or a possible molecular marker of antipsychotic response?

F. Marmo, Naples, Italy

C. Tomassetti, F. Iasevoli, C. Sarappa, E. Buonaguro, S. Giordano, G. Muscettola, A. de Bartolomeis

P-11-007

Analysis of BDNF Val66Met allele-specific mRNA levels in schizophrenia

V. de Luca, Toronto, Canada

R. de Souza, F. Panariello, C. Zai, T. Talerico, J. Kennedy, A. Wong

P-11-008

Association of VAL66met polymorphism of the brain-derived neurotrophic factor and serum BDNF in a sample of first psychotic episode patients

E. Rizos, Athens-Haidari, Greece

N. Siafakas, N. Stefanis, A. Douzenis, I. Rontos, E. Laskos, A. Kastania, V. Zoumbourlis, A. Giarika, L. Lykouras

P-11-009

Association between the gamma-aminobutyric acid type B receptor 1 (GABBR1) gene and schizophrenia

P. Manikantan, Coimbatore, India

K. Sasikala, V. Balachandar, B. Lakshankumar, S. Mohanadevi

P-11-010

Chronic and regional-specific changes in the expression of NR2A and NR2B NMDA receptor subunits in a neurodevelopmental animal model for cognitive dysfunction in schizophrenia

L. V. Kristiansen, Copenhagen, Denmark

T. Secher, V. Berezin, E. Bock, B. Pakkenberg

P-11-011

Characterization of the D-amino acid oxidase (DAO) interactome

M. Popiolek, Monmouth Junction, USA

P-11-012

In search of schizophrenia manifestation causes: Genetic polymorphism of mother and child

I. M. Halayenka, Belarus

V. G. Objedkov, O.-D. Levdansky, E. A. Aksyonova, M. G. Siniauskaya, N. G. Danilenko

S-32 SYMPOSIA

14.30 – 16.00 h Plenary Room

Large scale proteomic and gene expression studies on post-mortem brains in schizophrenia: What have we gained?

*Chairs: P. Falkai, Göttingen, Germany
W. Maier, Bonn, Germany*

S-32-001

The contribution of a transcriptome analysis of five CNS diseases towards the study of neurodegeneration and schizophrenia

*P. Durrenberger, London, United Kingdom
S. Fernando, S. Kashefi, I. Ferrer, D. Seilhean,
A. Schmitt, P. Gebicke-Haerter, E. Grünblatt,
T. Arzberger, D. Dexter, R. Reynolds*

S-32-002

Differential expression of subsets of genes in schizophrenia using genome-wide microarrays

*A. Schmitt, Göttingen, Germany
P. Gebicke-Haerter, P. Durrenberger, R. Reynolds,
P. Falkai*

S-32-003

Biomarkers for the early diagnosis of schizophrenia

S. Bahn, Cambridge, United Kingdom

S-32-004

Shotgun proteomics: What does it tell us about schizophrenia?

*D. Martins-de-Souza, Munich, Germany
W. F. Gattaz, A. Schmitt, S. Marangoni, J. C. Novello,
G. Maccarrone, C. W. Turck, E. Dias-Neto*

S-33 SYMPOSIA

14.30 – 16.00 h Harvard

Cognitive remediation and social functioning in schizophrenia

*Chairs: W. Wölwer, Düsseldorf, Germany
V. Roder, Bern, Switzerland*

S-33-001

Social cognition as a possible mediator between neuro-cognition and social functioning

*V. Roder, Bern, Switzerland
S. Schmidt*

S-33-002

Does remediation of basic cognitive impairments improve social functioning?

T. Wykes, London, United Kingdom

S-33-003

Does remediation of social cognitive impairments improve social functioning?

*W. Wölwer, Düsseldorf, Germany
N. Frommann*

S-33-004

Integrating cognitive remediation and other interventions to improve social functioning

R. Penadés, Barcelona, Spain

S-34 SYMPOSIA

14.30 – 16.00 h Stanford

Prediction of neuroleptic treatment response in schizophrenia

*Chairs: O. Gruber, Göttingen, Germany
W. Gaebel, Düsseldorf, Germany*

S-34-001

New concepts for predicting the outcome in neuroleptic treatment

W. Gaebel, Düsseldorf, Germany

S-34-002

Prediction of symptom remission in schizophrenia during inpatient treatment

H.-J. Möller, Munich, Germany

S-34-003

Neurofunctional phenotypes for the prediction of neuroleptic treatment response

O. Gruber, Göttingen, Germany

S-34-004

Genetic prediction of neuroleptic-response

R. Mössner, Bonn, Germany

S-35

SYMPOSIA

14.30 – 16.00 h

Princeton

Neurobiological and neurocognitive findings in persons at risk for psychosis

*Chairs: A. Riecher-Rössler, Basel, Switzerland
S. Ruhrmann, Cologne, Germany*

S-35-001

Elevated striatal dopamine function linked to prodromal signs of schizophrenia?

O. Howes, London, United Kingdom

S-35-002

EEG abnormalities in persons clinically at risk for psychosis

*A. Brockhaus-Dumke, Cologne, Germany
M. Bodatsch, R. Müller, F. Schultze-Lutter,
J. Klosterkötter, S. Ruhrmann*

S-35-003

Neurocognitive indicators for conversion to psychosis

R. Pukrop, Cologne, Germany

S-35-004

Brain structural and functional correlates of the 'at-risk mental state'

*S. Borgwardt, Basel, Switzerland
R. Smieskova, J. Aston, U. Gschwandtner,
M. Pflueger, E.-W. Radue, A. Riecher-Rössler*

CM

CONGRESS MEETINGS

16.30 – 17.00 h

Plenary Room

Closing Ceremony

O-07

ORAL PRESENTATIONS

17.00 – 18.30 h

Harvard

Comorbidity

*Chairs: W. Maier, Bonn, Germany
J. Zielasek, Düsseldorf, Germany*

O-07-001

Effect of a preventive weight-management program in schizophrenic patients treated with Olanzapine (formerly S-36-003)

J. Cordes, Düsseldorf, Germany

O-07-002

Cannabis and psychosis: The role of neurotrophic factors BDNF and NGF

*V. Ricci, Rome, Italy
F. Angelucci, P. Bria, C. Caltagirone*

O-07-003

Schizophrenia and substance abuse: A specific treatment proposal

*A. Catalan, Bilbao, Spain
M. González-Torres, S. Bustamante, A. Madrazo, L. Pérez*

O-07-004

Concomitant lifetime disorders in two psychosis syndromes

*V. Ajdacic-Gross, Zürich, Switzerland
J. Angst, A. Gamma, W. Rössler*

O-07-005

Self rated psychotic symptoms in depressed inpatients – a valid source of information?

*F. Seemüller, Munich, Germany
H.-J. Möller, M. Obermeier, A. Mayr, R. Schen-nach-Wolff, M. Riedel*

O-07-006

Influence of stigmatization and self-stigmatization of schizophrenic on their socially dangerous behavior

*G. Bogojevic, Belgrade, Serbia
L. Ziravac*

S-37	SYMPOSIA
17.00 – 18.30 h	Stanford
Learning potential and related concepts in schizophrenia: From neurobiology to clinical practice	
<i>Chairs: K. H. Wiedl, Osnabrück, Germany P. Ohrmann, Münster, Germany</i>	

S-37-001

Learning potential in the WCST: Can we describe learner types by their pattern of errors?

*M. Waldorf, Osnabrück, Germany
K. H. Wiedl*

S-37-002

Neurobiological correlates of learning potential in schizophrenia

*A. Pedersen, Münster, Germany
A. Wilmsmeier, J. Bauer, K. Koelkebeck, A. Siegmund, T. Suslow, K. H. Wiedl, V. Arolt, P. Ohrmann*

S-37-004

Possible psychological treatments based on learning and cognition

V. Roder, Bern, Switzerland

S-38	SYMPOSIA
17.00 – 18.30 h	Princeton
Cycloid psychoses: From clinical concepts to biological foundations	
<i>Chairs: B. Pfulmann, Würzburg, Germany F. van der Heijden, Venray, The Netherlands</i>	

S-38-001

Cycloid psychosis in ICD and DSM: A naturalistic study

*F. van der Heijden, Venray, The Netherlands
W. Verhoeven*

S-38-002

Cycloid psychoses: Clinical and genetic aspects

*G. Stoeber, Würzburg, Germany
B. Jabs, B. Pfulmann*

S-38-003

Outcome in a 10-year follow-up study on cycloid psychosis

B. Pfulmann, Würzburg, Germany

S-38-004

Neuroimaging in cycloid psychoses

J. Foucher, Strasbourg, France

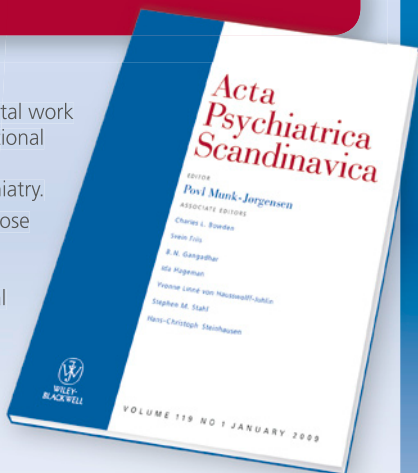
Submit Online Today!

Acta Psychiatrica Scandinavica

Contains high-quality scientific articles in English, representing clinical and experimental work in psychiatry. The journal acts as an international forum for the dissemination of information advancing the science and practice of psychiatry.

Original articles are welcomed, especially those that bring new knowledge or extend the present understanding of treatment. Equal priority is given to review articles and clinical overview articles.

Recent prominent authors include Hagop Akiskal, Jules Angst, Tom G. Bolwig, Peter Buckley, S. Nassir Ghaemi, Anthony Jorm, Gin S. Malhi, Gordon Parker, Stefan Priebe, Stephen M. Stahl, David Taylor, Jim van Os, Euard Vieta, Peter Weiden and Mary Zanarini.



Topics covered in recent papers include:

- Treatment and other aspects of depression and subthreshold depression
- Treatment and other aspects of schizophrenia
- Physical illness and weight gain in psychiatric diseases
- Cognitive functioning and treatment in bipolar and other disorders
- Childhood trauma in development of psychosis
- Substance use disorders in psychiatric diseases
- Cannabis in the development of psychosis

To submit your next paper to *Acta Psychiatrica Scandinavica*, visit:
<http://mc.manuscriptcentral.com/actapsych>

For author guidelines and further information visit: www.actapsychiatria.com

Author Benefits:


- **Quick and easy online submission** - via Manuscript Central
- **Advanced article tracking** - from submission through to acceptance and publication with Author Services
- **Fast publication times** - articles are available online weeks ahead of print publication
- **Online Open** - authors of articles in this journal can now choose to make their articles open access and available free for all readers through the payment of an author fee.

ACKNOWLEDGEMENTS

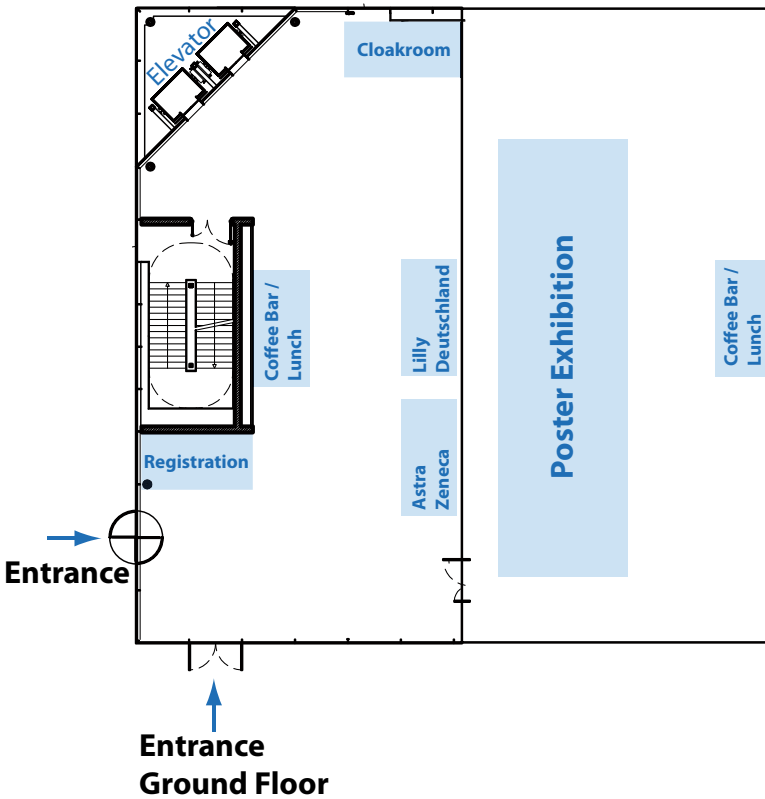
ACKNOWLEDGMENTS

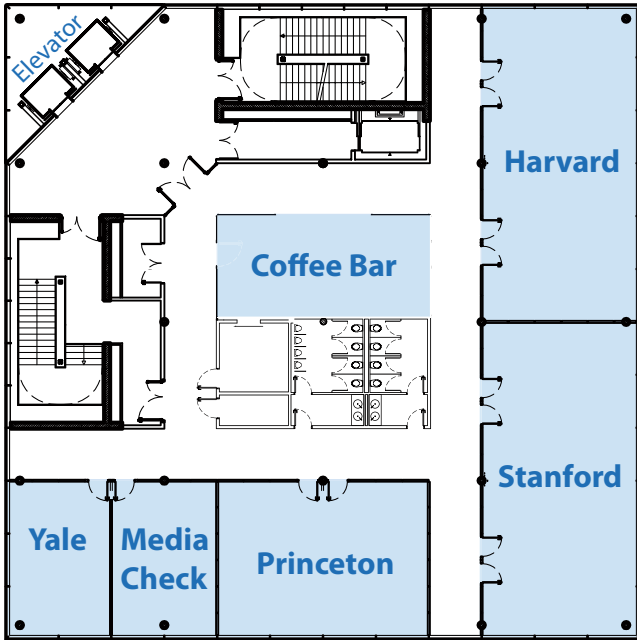
The organisers of the 2nd European Conference on Schizophrenia Research gratefully acknowledge the support of the following companies:

AstraZeneca  AstraZeneca

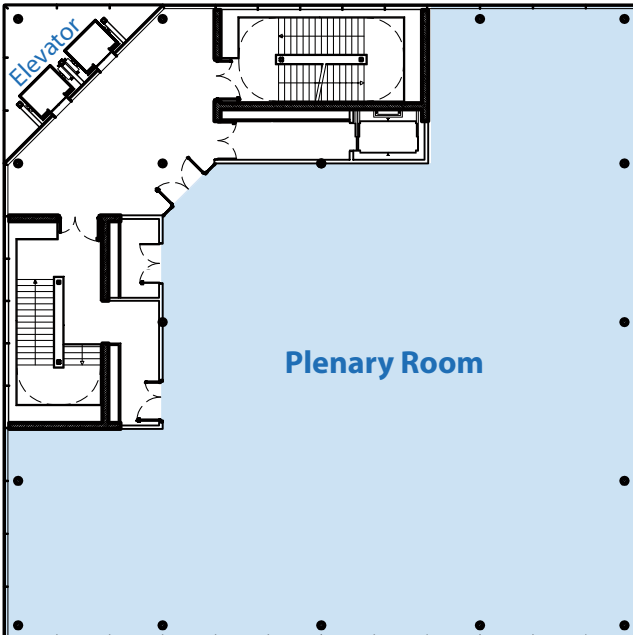
Lilly Deutschland GmbH 

FLOORPLAN





First Floor



Second Floor

INDEX OF CHAIRPERSONS, AUTHORS AND PRESENTERS

A

Abdollahian, E.	29
Ahmadzadeh, G.	30
Ajdacic-Gross, V.	36, 47
Alvarez-Jimenez, M.	15
Amering, M.	22
Aminoff, S.	31
Aminolroayaie Yamini, M.	19
Ammon, M.	23
Ansari, H.	19
Arranz, M.	14
Attari, A.	30
Awad, A. G.	23, 36

B

Baeza, I.	18
Bahn, S.	27, 46
Bakanidze, G.	44
Barahmand, U.	35
Barajas, A.	18
Baran, X. Y.	19
Bechdorf, A.	15, 32
Begré, S.	42
Bergé, D.	16
Berger, G.	15, 18, 36
Berger, S.	18, 44
Bernstein, H.-G.	44
Birchwood, M.	26, 32
Bittner, R.	27
Bogojevic, G.	47
Borbé, R.	22
Borgwardt, S.	47
Borja Santos, N.	44
Brand, A.	27
Bridges, J. F. P.	17
Brockhaus-Dumke, A.	47
Broekema, W. J.	24
Brotos Girona, O.	30
Brüne, M.	25

C

Cadranel, M.	30
Cahn, W.	25, 33, 38, 39
Casañas Sanchez, R.	29
Catalan, A.	47
Cermak, J.	43
Chen, E. E.	15
Cichocki, A.	17
Cichon, S.	21
Contreras, F.	41
Cordes, J.	47
Correia, D.	28
Correll, C.	29
Cullen, A.	35

D

Dangellia, A.	16
Dickson, H.	35
Dievel, M. van	14
Do, K. Q.	27
Dollfus, S.	36
Drexhage, H.	21
Duñó, R.	41
Durrenberger, P.	46

E

Ehrenreich, H.	25
Elfrink, M.	34
Evensen, J.	23, 31

F

Faerden, A.	31
Falkai, P.	22, 25, 39, 46
Foucher, J.	33, 34, 36, 48
Fowler, D.	40
Freimueller, L.	22
French, P.	32
Frommann, N.	31

G

Gaag, M. van der	30, 32, 35
Gaebel, W.	14, 15, 20, 23, 24, 26, 37, 39, 47
Galderisi, S.	20, 27, 37
Gallinat, J.	43
Garety, P.	37, 41
Gaur, R.	17
Geert, S. van	17
Giakoumaki, S.	42
Gijsman, H.	34
Glenthøj, B.	39
Gorna, K.	16
Gorwood, P.	14
Gradussen, S.	34
Grande, I.	35
Gruber, O.	22, 33, 47
Gründer, G.	24, 34
Gschwandtner, U.	33
Gulzar, M.	30
Gurovich, I. Y.	28

H

Habel, U.	22
Haker, H.	41
Halayenka, I. M.	45
Hamtat, M.-L.	31
Haralanova, E.	25
Hargarter, L.	29
Harrison, G.	24
Hauser, M.	25
Heinimaa, M.	26

INDEX OF CHAIRPERSONS, AUTHORS AND PRESENTERS

- Heijden, F. van der48
Henderson, C.....14
Hert, M. de26
Herzog, M.....27
Hodgins, S..... 35, 37
Homayouni, A.....25
Höschl, C.....14
Howes, O.....39, 43, 47
- I**
- Illankovic, L. M.....25
Iliadou, V.....42
Iliopoulou, L.....30
Ince, H.....29
Ingretolli, S.....16
- J**
- Jablonski, M.....30
Jabs, B.....38
Jacobsen, B.....34
Jaeger, S.....17
Jäger, M.....33
Jaracz, K.....16
Jardri, R.....36
Jimeno, N.....30
Joe, S.....19
Joukamaa, M.....36
Joyce, E.....27, 37
- K**
- Kaprinis, S.....42
Kasperek, T.....33
Kazaryan, G.....44
Kerkhof, N. van de28, 29
Killackey, E.....20
Kircher, T.....22
Klein, H.....21
Klingberg, S.....23, 32, 40
Klosterkötter, J.....26, 28
Koch, K.....43
Koelkebeck, K.....33
Kristiansen, L. V.....45
- L**
- Laia, M.....31
Lalucat-Jo, L.....29
Landgraf, S.....25
Langbein, K.....29, 43
Lau, A.....20
Laurens, K. R.....35
Lebedeva, I.....27
Lehmann, A.....41
Ler, S.....19
Leucht, S.....24, 28, 37, 39
Leweke, M.....38
Lin, E.....17
- Luca, V. de.....45
Lyubov, E.....28
- M**
- Maeser, O.....23
Maier, W.....14, 21, 46, 47
Maitra, R.....33, 44
Major, B.....20
Mane, A.....16
Manikantan, P.....45
Marmo, F.....45
Maroufi, M.....29
Martins-de-Souza, D.....46
McGorry, P. D.....15, 20, 28, 32
Mc Nally, K.....23
Mehl, S.....40
Melle, I.....31
Menezes, A. K. P. M.....19, 28
Milleit, B.....18, 43
Mingoia, G.....33
Misri, S.....23
Möller, H.-J.....26, 33, 39, 41, 47
Moncrieff, J.....34
Morken, G.....37
Mossaheb, N.....41
Mössner, R.....21, 47
Myin-Germeyns, I.....40
Myint, A.-M.....21
- N**
- Neuhaus, A.....42
Nordentoft, M.....15, 36, 37
- O**
- Obermeier, M.....17
Ohrmann, P.....44, 48
Opgen-Rhein, C.....30, 45
Orlova, N.....19
Os, J. van.....14, 20, 23
Otte, D.-M.....40
Owen, M.....14, 23
- P**
- Pajonk, F.....25
Papageorgiou, K.....23
Parnas, J.....39
Pedersen, A.....48
Penadés, R.....46
Pflueger, M. O.....36, 42
Pfuhrmann, B.....38, 48
Pinto Neves, M. T.....42
Pintsov, O.....23
Pirlog, M.....30
Pitschel-Walz, G.....35
Popiolek, M.....45

INDEX OF CHAIRPERSONS, AUTHORS AND PRESENTERS

Puig, O.	31
Pujol, N.	41
Pukrop, R.	47
Purvina, S.	44

Q

Quee, P.	41
---------------	----

R

Rakitz, S.	31
Rausch, F.	24
Reichenberg, A. A.	25, 37
Rezaei Ghalechi, E.	19
Ricci, V.	47
Richa, S.	29
Riecher-Rössler, A.	33, 37, 47
Riedel, M.	30, 33
Riesbeck, M.	15
Rietschel, M.	21
Rinaldi, M.	20
Rivero, O.	44
Rizos, E.	45
Roder, V.	32, 35, 46, 48
Roessberg, J. I.	31
Roinishvili, M.	27
Romm, K. L.	31
Roser, P.	38
Rössler, W.	22, 32
Ruhrmann, S.	15, 26, 47
Rujescu, D.	21, 40, 44

S

Salokangas, R. K. R.	24
Sanchez-Gistau, V.	19
Sanemeterio, M.	29
Santos, F. R.	42
Schaub, D.	17
Schennach-Wolff, R.	16, 33, 35
Schimansky, J.	41
Schlagenhauf, F.	43
Schlögelhofer, M.	41
Schmauß, M.	24, 29
Schmitt, A.	40, 46
Schneider, F.	22
Schreiner, A.	29
Schultz, C.	43
Schwarz, M. J.	21
Seemüller, F.	16, 47
Serna, E. de la	18
Shrivastava, A.	16
Silva, F.	28
Singh, S.	20
Singla, N.	27
Smith, J.	20
Smolina, N.	44

Stathopoulou, A.	18
Stoeber, G.	34, 38, 48
Strik, W.	22, 43
Stroth, S.	18
Sulejmanpasic-Arslanagic, G.	19
Svirskis, T.	26

T

Tessier, C.	28
Theil, M.-M.	16
Thiemann, U.	42
Tranulis, C.	36

U

Uhlhaas, P. J.	27
Ujeyl, M.	35
Urbanek, C.	42
Utschakowski, J.	22
Uzbekov, M.	44

V

Vargas, M.	17, 28
Vauth, R.	24
Verhoeven, W.	19, 38
Voruganti, L.	19, 36
Voss, M.	25
Vyshka, G.	18

W

Wagner, M.	24, 42
Waldorf, M.	48
Wallcraft, J.	14
Weinmann, S.	26
Werge, T.	27
Werneck, A. P.	28
Wiedl, K.H.	48
Wilquin, H.	36
Wobrock, T.	35, 38
Wolf, R.	40
Wölwer, W.	25, 33, 41, 46
Wunderink, L.	15, 16
Wykes, T.	32, 46

Y

Yeghiyan, M.	30
-------------------	----

Z

Zamarro Arranz, M.	19
Zäske, H.	14
Zielasek, J.	16, 28, 47
Zierhut, K.	43
Zimmermann, R.	18
Zlenko, H.	28
Zwiler, J.	34



German Association for Psychiatry and Psychotherapy

DGPPN CONGRESS 2009

with DGPPN Academy for Continuing Medical Education



25 – 28 November 2009 // ICC Berlin, Germany

Psychiatric Disorders through Lifespan

More than 500 sessions

Educational symposia

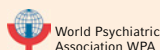
More than 30 CME credits achievable

Special sessions for students

DGPPN Congress Kindergarten

Free for new DGPPN members 2009

www.dgppn-congress.de



U4